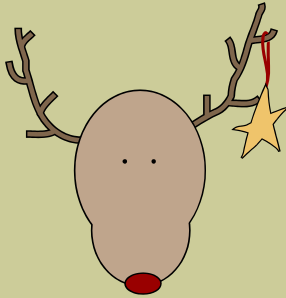


We're on the Web!  
OzarksAGA.org

December



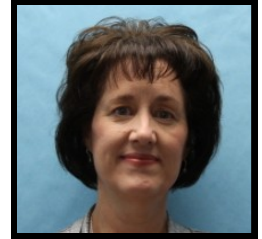
2014

**Inside This Issue:**

Community Service	2
Future Training Dates	3
Report From Treasurer	4
CEC Minutes	5
Local Member News	7
Community Service	8

See Page 3 for information on our January \*Breakfast\* Meeting!

## Message from the President



Holiday Greetings!!! Hopefully your November Thanksgiving holiday is effectively morphing into December festivities and you are thoroughly enjoying the season. It is especially at this time of year that we devote much of our personal resources (time, money, effort, etc.) to our friends and families and to those activities that are meaningful to us. In no other month do we talk or think about “giving” as much as during this time. It is curious to me that from a cultural perspective even though we all give in many ways throughout the year, our individual giving efforts don’t seem to garner the same attention as when we give during the holiday season. Why is that? Perhaps it is because when we give during the holidays we are doing so at a societal level. It is collective giving on a grand scale. Do we not, in fact, participate in more group level giving activities during the holidays than any other time of year (i.e., Toys for Tots collections, holiday gatherings, caroling at nursing homes, etc.)? Consider, too, the many giving opportunities that emerge during the holiday season that are not present at any other time: the charity bell ringers, the Black Friday shopping sales, the surge in mail order catalogues that fill our snail mail and e-mail boxes. With so many demands, it is easy to lose perspective. It is easy for the joy of giving to become the chore of giving. Therefore, to celebrate the spirit of giving and to help keep the focus on its positive aspects, I GIVE YOU this month a collection of short quotes from well-known people: “I have found that among its other benefits, giving liberates the soul of the giver.” –Maya Angelou

- “Give to the world the best you have and the best will come back to you.” -Madeline Bridges
- “Life is a gift, and it offers us the privilege, opportunity, and responsibility to give something back by becoming more.” –Anthony Robbins
- “Real generosity toward the future lies in giving all to the present.” –Albert Camus
- “Giving pays the highest interest rate, and has the longest term, of any investment available.” – Jeffrey K. Wilson
- “Giving is the lifeblood of happy living.” –Todd Parrish
- “It’s not how much we give but how much love we put into giving.” Mother Teresa
- “We make a living by what we get. We make a life by what we give.” –Winston S. Churchill
- “Wealth isn’t always measured in dollar signs. We each have time, talent and creativity all of which can be powerful forces for positive change. Share your blessings in whatever form they come and to whatever level you have been blessed.” –John Hunstman

May your holiday giving bring you joy and may you have a peaceful holiday season!

*Debra Burling*

## Chapter Executive Committee

Advancing Government Accountability.

**Chapter President**

Debra Burling  
[dburling@spsmail.org](mailto:dburling@spsmail.org)  
 Ph: 417-523-0054

**President-Elect**

Wayland Mueller  
[wmueller@spsmail.org](mailto:wmueller@spsmail.org)  
 Ph: 417-523-0679

**Secretary**

Brandi Aldridge  
[baldridge@springfieldmo.gov](mailto:baldridge@springfieldmo.gov)  
 Ph: 417-841-1899

**Treasurer**

Greg Drake  
[gdrake@spsmail.org](mailto:gdrake@spsmail.org)  
 Ph: 417-523-0004

**Accountability Chair**

Rick Findley  
[rickfindley@yahoo.com](mailto:rickfindley@yahoo.com)  
 Ph: 417-546-7287

**Director of Education**

Teresa Allen  
[tallen@springfieldmo.gov](mailto:tallen@springfieldmo.gov)  
 Ph: 417-864-1634

MaryJo Kerringer  
[mkerringer@springfieldmo.gov](mailto:mkerringer@springfieldmo.gov)  
 Ph: 417-864-1870

**Director of Membership**

Jody Vernon  
[jvernon@springfieldmo.gov](mailto:jvernon@springfieldmo.gov)  
 Ph: 417-864-1616

**Director of Professional Certification**

Sharla Bailey  
[sbailey@sbuniv.edu](mailto:sbailey@sbuniv.edu)  
 Ph: 417-328-1755

**Director of Communications**

Brandie Fisher  
[bfisher@springfieldmo.gov](mailto:bfisher@springfieldmo.gov)  
 Ph: 417-864-1852

**Director of Community Services**

Pam Cox  
[pcox@springfieldmo.gov](mailto:pcox@springfieldmo.gov)  
 Ph: 417-864-1886

**Early Careers Chair**

Paul Essel  
[jackobby@yahoo.com](mailto:jackobby@yahoo.com)  
 Ph: 417-836-8873

**Website**

Teresa Allen, CGFM  
[tallen@springfieldmo.gov](mailto:tallen@springfieldmo.gov)  
 Ph: 417-864-1631

**CGFM News****Interested in the CGFM Certification?**

The Ozarks AGA has a set of current study guides available for checkout—one book at a time for 2 months at a time. They are in three separate three-ring binders – one for each section. If you are interested in borrowing one of the study guides, please notify Tina McManus at [tinamcmanus@missouristate.edu](mailto:tinamcmanus@missouristate.edu) and she will arrange for you to check it out when it becomes available.

One of the benefits of being a member of our Ozarks Chapter is that we will reimburse you for the successful passing of the CGFM exam in its entirety.

**During the Month of December...**

Candidates for the CGFM Examinations receive a \$20 discount for *EACH* CGFM examination taken in December.

**Interested in the CGFM?**

Contact Sharla Bailey, CGFM Chair, to inquire about opportunities in our area.

**Update Your Member Profiles at AGACGFM.org**

Confirm contact info, verify subscription preferences and more! Members who update their profile by Dec. 15th are eligible for one of three \$50 American Express Gift Cards!

**Fall/Winter Membership Drive**

Enjoy the benefits of AGA membership—Join Today!

New members who join AGA now through the January meeting will receive a \$10 gift card. Members who encourage others to join will receive a \$5 gift card for each new member he or she recruits now through the January meeting.

Membership materials are available online at <http://www.agacgfm.org/membership/overview.aspx> or through Jody Vernon, Membership Chair.

**National/Regional Training Opportunities**

AGA Events & Conferences

AGA Web Conference

Auditing/Internal Controls  
 January 14, 2015 2:00-3:50 ET  
 2 CPE

Earn CPE Online!

AGA Journal CPE Quizzes  
 Becker Educational Programs

**January *Breakfast* Meeting**

January 15, 2014

8:00-9:00 AM

Topic: IRS Update

Speaker: Sharon Boone

Members: \$10, Non-Members \$10

Panera Bread—500 S. National

RSVP to Jody Vernon by 5:00, on  
 Tuesday the 13th.

**Future Ozarks Chapter Professional Development**

Month	Year	Date	Topic/Speaker	Location
June	2014	19th	Summer Break	
July	2014	17th	Summer Break	
August	2014	14st	GASB 65 and 67	Tower Club
September	2014	24th	Single Audit	Cooper Tennis
October	2014	23th	8hr Fall Seminar	White River Conference Ctr.
November	2014	20th	Talent Selection/Interviewing	Cooper Tennis
December	2014	11th	Member Social	Jimms
January	2015	15th	IRS Update	Panera
February	2015	19th	Popular Reporting/CGFM	Kraft Admin
March	2015	19th	Spring Seminar	Bass Pro
April	2015	16th	Field Trip—Grant Funding	TBD
May	2015	21st	MSU Career Center	TBD

**Association of Government Accountants  
Ozarks Chapter  
Fiscal Year 2015  
July 1, 2014 Through November 30, 2014**

	FY15 Budget Revenue	FY15 Actual Revenue	November 2014 Revenue
<b>Revenues:</b>			
Chapter Dues	415.00	\$ 75.00	\$ -
Monthly meetings	1,530.00	\$ 1,340.00	\$ 250.00
<b>Seminars:</b>			
Fall Seminar	2,400.00	\$ 3,335.00	\$ -
Fall Seminar Sponsorships	1,500.00	\$ 1,500.00	\$ -
Spring Membership Seminar	6,800.00	\$ -	\$ -
Spring Seminar Sponsorships	1,500.00	\$ -	\$ -
<b>Other Revenues:</b>			
Recruiting stipend from National AGA	164.00	\$ 164.00	\$ -
Charity Fundraisers	-	\$ -	\$ -
Miscellaneous Revenue	283.00	\$ -	\$ -
Interest	5.00	\$ 1.90	\$ 0.42
<b>Total Revenues</b>	<b>\$ 14,597.00</b>	<b>\$ 6,415.90</b>	<b>\$ 250.42</b>

	FY15 Budget Expense	FY15 Actual Expense	November 2014 Expense
<b>Expenses:</b>			
Monthly Meeting Expenses:	1,463.00	\$ 1,296.99	\$ 171.43
<b>Seminar Expenses:</b>			
Fall Seminar	2,500.00	\$ 1,830.77	\$ -
Spring Membership Seminar-Expenses	2,100.00	\$ -	\$ -
Spring Membership Seminar-Dues	3,600.00	\$ -	\$ -
Community Service Expense	500.00	\$ -	\$ -
<b>Scholarships:</b>			
Educational (Post Secondary Ed) Scholarships	1,800.00	\$ -	\$ -
CGFM (Member) scholarships	400.00	\$ 400.00	\$ -
PDC (CEC)Travel Stipend	1,750.00	\$ -	\$ -
Membership Drive Expense	164.00	\$ 110.00	\$ 80.00
Replenish speaker gifts	-	\$ -	\$ -
Miscellaneous Expense	320.00	\$ 34.04	\$ -
<b>Total Expenses</b>	<b>\$ 14,597.00</b>	<b>\$ 3,671.80</b>	<b>\$ 251.43</b>

Change in Fund Balance:	Projected	Actual	Actual
Beginning	6,950.92	6,950.92	\$ 9,696.03
Revenue	14,597.00	6,415.90	\$ 250.42
Expenses	(14,597.00)	(3,671.80)	\$ (251.43)
Net Change	-	2,744.10	\$ (1.01)
Ending	<u>\$ 6,950.92</u>	<u>\$ 9,695.02</u>	<u>\$ 9,695.02</u>



## CEC Minutes

### December 4, 2014 CEC Meeting Minutes

**DRAFT**

12:00 PM – 1<sup>st</sup> floor conference room – Busch Building, 840 Boonville

#### **Attendance:**

Debra Burling, Teresa Allen, Brandie Fisher, Pam Cox, Wayland Mueller, MaryJo Kerringer, Jody Vernon, Greg Drake

#### **Secretary – Brandi Aldridge**

Minutes of the October 30, 2014 CEC meeting, presented by e-mail, were passed with a motion from Greg Drake and a second from Pam Cox.

#### **Treasurer- Greg Drake**

The Treasurer's report was distributed. Greg reported that the Chapter received the \$1,500 seminar sponsorship donation. There was discussion regarding whether the four \$15 registrations paid from the recruitment stipend should be included as meeting revenue. Greg will discuss at the next CEC meeting whether or not the Treasurer's report should be amended to reclassify \$60 from stipend revenue to meeting revenue.

#### **Education – Teresa Allen and MaryJo Kerringer**

Teresa reported that currently six people have signed up to attend the December AGA event on Friday Dec 12.

The January event will take place on January 15 at Panera Bread on National from 8:30 until 10:00 (Breakfast meeting). The speaker will be Sharon Boon and she will present a tax update.

In February, the chapter will meet at Springfield Public Schools and John Everest will discuss the GFOA.

The March chapter meeting will take place at Bass Pro (more details to follow).

Whether to purchase or continue to rent a projection screen for the monthly meetings was discussed. A new screen will cost around \$250. Brandie made a motion to purchase one seconded by Jody and the motion carried. Teresa will make the purchase.

#### **Communication - Brandie Fisher**

Brandi is still waiting to hear back from the National office regarding feedback on our CCR.

Dec newsletter deadline for articles is this Friday, Dec 5. Jan newsletter deadline is 5:00 on Jan 6th

#### **Community Service – Pam Cox**

Nov/Dec community service project is Toys for Tots; the last day to donate is at the Dec 12 chapter social.

The property tax community service project on Jan 24<sup>th</sup> and 31<sup>st</sup> was discussed. Debra indicated that an article describing the project will appear in the Dec newsletter.

Pam proposed raising funds for an animal rescue group as a project for the chapter.

## CEC Minutes



December CEC Draft Minutes Cont.

### **Membership – Jody Vernon**

Jody stated that all Membership Recruitment monies have been earmarked including: \$20 for new member gift cards, \$10 for recruiting gift cards, \$60 for non-members attending the 11/20 meeting, \$20 for members bringing guests to the 11/20 meeting, and \$60 for complimentary meeting passes to non-members redeemable through May.

Debra volunteered to check people in and collect money at the December lunch meeting as Jody is unable to attend.

A free membership appreciation event was discussed for next year. Also discussed was that the membership may not be aware that the December event this year is also a member appreciation event. The \$10 charge for attending is only part of the actual cost; the remainder of the cost is being subsidized by the chapter.

Jody handed out a record retention guide. The CEC will use the guide to identify what documents the chapter should be retaining and then come up with a plan at the next meeting to manage those historical documents. Greg proposed the use of a “dropbox” to store documents. He will gather more information and report back at the next CEC meeting.

### **Old Business – Debra Burling**

The chapter plans to develop a Survey Monkey after the holidays to determine membership satisfaction.

Debra will follow up with Tina regarding updating chapter bylaws to reflect changes at National bylaws level.

### **New Business – Debra Burling**

Debra reminded the CEC that the 2<sup>nd</sup> quarter Chapter Recognition points due date is coming up at end of Dec or early Jan.

**Next CEC meeting:** January 29<sup>th</sup> Noon

**Meeting adjourned at 12:35 pm**

# Ozarks Chapter News

## Local Ozarks AGA Chapter News!



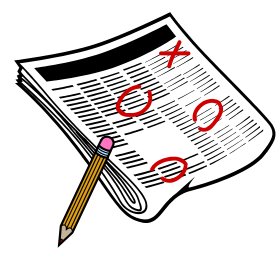
Karen Shannon, Business Consulting Division Leader, speaks on talent selection at the November meeting.

Ozarks AGA website is back up and running and up to date.  
 Visit us at: [www.ozarksaga.org](http://www.ozarksaga.org)

The Ozarks Ledger is a publication of the Ozarks Chapter of The Association of Government Accountants  
**Brandie Fisher, Editor**  
 Deadline for articles: **30th** of each month  
 Send articles to: [bfisher@springfieldmo.gov](mailto:bfisher@springfieldmo.gov)

### Accounting Career Opportunities in the Ozarks

- [Ozarks Technical College](#)
- Accounting Technician
- [Missouri State University](#)
- Accounting Technician
- [Christian County](#)
- Payroll Clerk



### Unique Community Service Opportunity in January

Our Ozarks AGA chapter has a terrific community service opportunity in January and it would be awesome if we had a nice chapter turn out for this event. We will partner with the Southwest Missouri Office on Aging to assist elderly and low income families prepare their MO Property Tax Credit form for calendar year 2014. Here is how it will work:

- The project will take place over two Saturdays in January (the 24<sup>th</sup> and the 31<sup>st</sup>) at two locations: South Side Senior Center (2215 S. Fremont) and Northview Senior Center (Doling Park).
- The duration of each day's session will be 5 hours (work either one or both days).
- The task is to help taxpayers complete the simple one page MO-PTC (Property Tax Credit) form by adding income sources (which the taxpayers will provide) and then looking up the income on a table to determine the eligible property tax credit amount.
- Even though we will fill out the MO-PTC form, only the tax payer will sign the form (volunteers do not sign).
- We will need to bring calculators to calculate total income (simple addition from the sources provided by the taxpayer).
- We will make a copy of the completed MO-PTC form and then give the original and the copy to the taxpayer.
- We will receive training 15 minutes prior to the start of the sessions at the locations.

The task is so easy that each volunteer will be able to process several MO-PTC forms in an hour. The Office on Aging coordinators say there are several thousand people in our community that need this assistance. Other volunteers besides our AGA chapter will be assisting on these two Saturdays as well.

Won't you please consider donating a few hours of your time and your mathematical expertise to help with this very worthy cause? This is a perfect opportunity for our AGA chapter to perform community service using our professional skills. The Southwest Missouri Office on Aging will need a final volunteer count by the first or 2<sup>nd</sup> week in January (and they will be extremely grateful for any assistance from us). If you want to be a part of this project or if you have questions regarding this opportunity, please e-mail AGA Ozarks Chapter President Debra Burling at: [dburling@spsmail.org](mailto:dburling@spsmail.org)

