

We're on the Web!
OzarksAGA.org

January

2014

Inside This Issue:

Community Service	2
Future Training Dates	3
Report From Treasurer	4
CEC Minutes	5
Local Member News	7
Community Service	8

See Page 3 for information on our January *Breakfast* Meeting!

Message from the President



Happy 2015! I hope your 2014 holiday season was filled with many enjoyable happenings and that you are looking forward to a great new year. What better way for our local AGA chapter to embrace the new year then by offering chapter members two exciting never-before-attempted (that I know of) activities in the month of January. First, on the 15th, our regular monthly chapter meeting will be held at Panera Bread located at 500 S. National. What's new about this month's meeting is that we will meet for BREAKFAST instead the usual lunch gathering. Please join us from 8:30 until 9:30 on the 15th at Panera to listen to Sharon Boone discuss IRS updates.

Second, this month our chapter will partner with the Southwest Missouri Office on Aging to assist elderly and low income families calculate their MO Property Tax Credit for calendar year 2014. The project will take place over two Saturdays, January 24th and 31st, at two locations: South Side Senior Center (2215 S. Fremont) and Northview Senior Center (Doling Park). The duration of each day's session will be 5 hours and chapter volunteers can assist either one or both days. This is a great community service opportunity for our chapter that promises to be a rewarding experience for members who participate. Volunteers will help folks complete the simple one page MO-PTC (Property Tax Credit) form. Don't know what the MO-PTC form is? No worries. There will be a 15 minute training session immediately prior to the start time. All you need to do is show up with a calculator (to perform the simple addition necessary to complete the form) and a willingness to be of service to folks who will be grateful for the assistance. The Office on Aging coordinators say there are several thousand people in our community that need this help. Other volunteers besides our AGA chapter will assist on these two Saturdays as well.

Won't you please consider donating a few hours of your time and your mathematical expertise to help with this very worthy cause? I would like to give the Office on Aging a volunteer count by **January 14**. If you want to be a part of this project (and have not already signed up with me) or if you have questions regarding this opportunity, please e-mail me at: dburling@spsmail.org. I will contact volunteers when we get closer to the session dates to communicate start times and any other necessary information.

Hope to see you at the breakfast meeting and the community service event this month!

Debra Burling

Chapter Executive Committee

Chapter President

Debra Burling
dburling@spsmail.org
 Ph: 417-523-0054

President-Elect

Wayland Mueller
wmueller@spsmail.org
 Ph: 417-523-0679

Secretary

Brandi Aldridge
baldridge@springfieldmo.gov
 Ph: 417-841-1899

Treasurer

Greg Drake
gdrake@spsmail.org
 Ph: 417-523-0004

Accountability Chair

Rick Findley
rickfindley@yahoo.com
 Ph: 417-546-7287

Director of Education

Teresa Allen
tallen@springfieldmo.gov
 Ph: 417-864-1634

MaryJo Kerringer
mkerringer@springfieldmo.gov
 Ph: 417-864-1870

Director of Membership

Jody Vernon
jvernon@springfieldmo.gov
 Ph: 417-864-1616

Director of Professional Certification

Sharla Bailey
sbailey@sbuniv.edu
 Ph: 417-328-1755

Director of Communications

Brandie Fisher
bfisher@springfieldmo.gov
 Ph: 417-864-1852

Director of Community Services

Pam Cox
pcox@springfieldmo.gov
 Ph: 417-864-1886

Early Careers Chair

Paul Essel
jackobby@yahoo.com
 Ph: 417-836-8873

Website

Teresa Allen, CGFM
tallen@springfieldmo.gov
 Ph: 417-864-1631

CGFM News

Interested in the CGFM Certification?

The Ozarks AGA has a set of current study guides available for checkout—one book at a time for 2 months at a time. They are in three separate three-ring binders – one for each setion. If you are interested in borrowing one of the study guides, please notify Tina McManus at tinamcmanus@missouristate.edu and she will arrange for you to check it out when it becomes available.

One of the benefits of being a member of our Ozarks Chapter is that we will reimburse you for the successful passing of the CGFM exam in its entirety.

Maintaining CGFM Certifications

- Pay the CGFM renewal fee of \$30 for members and \$65 for non-members, by March 31st.
- Complete at least 80 hours of CPE every 2 years in government financial management topics or related technical subjects.
- Maintain and, if requested by AGA, provide detailed information on CPE hours completed.

If retired or inactive, contact a CEC member or the national AGA office to inquire about CGFM renewal requirements.

Check out career opportunities on page 6!

Interested in the CGFM?

Contact Sharla Bailey, CGFM Chair, to inquire about opportunities in our area.



Fall/Winter Membership Drive

Enjoy the benefits of AGA membership—Join Today!

New members who join AGA now through the January meeting will receive a \$10 gift card. Members who encourage others to join will receive a \$5 gift card for each new member he or she recruits now through the January meeting.

Membership materials are available online at <http://www.agacgfm.org/membership/overview.aspx> or through Jody Vernon, Membership Chair.

**Association of Government Accountants
Ozarks Chapter
Fiscal Year 2015
July 1, 2014 Through December 31, 2014**

	FY15 Budget Revenue	FY15 Actual Revenue	December 2014 Revenue
Revenues:			
Chapter Dues	415.00	\$ 75.00	\$ -
Monthly meetings	1,530.00	\$ 1,475.00	\$ 135.00
Seminars:			
Fall Seminar	2,400.00	\$ 3,335.00	\$ -
Fall Seminar Sponsorships	1,500.00	\$ 1,500.00	\$ -
Spring Membership Seminar	6,800.00	\$ -	\$ -
Spring Seminar Sponsorships	1,500.00	\$ -	\$ -
Other Revenues:			
Recruiting stipend from National AGA	164.00	\$ 164.00	\$ -
Charity Fundraisers	-	\$ -	\$ -
Miscellaneous Revenue	283.00	\$ -	\$ -
Interest	5.00	\$ 2.40	\$ 0.50
Total Revenues	<u>\$ 14,597.00</u>	<u>\$ 6,551.40</u>	<u>\$ 135.50</u>

	FY15 Budget Expense	FY15 Actual Expense	December 2014 Expense
Expenses:			
Monthly Meeting Expenses:	1,463.00	\$ 1,577.86	\$ 280.87
Seminar Expenses:			
Fall Seminar	2,500.00	\$ 1,830.77	\$ -
Spring Membership Seminar-Expenses	2,100.00	\$ -	\$ -
Spring Membership Seminar-Dues	3,600.00	\$ -	\$ -
Community Service Expense	500.00	\$ -	\$ -
Scholarships:			
Educational (Post Secondary Ed) Scholarships	1,800.00	\$ -	\$ -
CGFM (Member) scholarships	400.00	\$ 400.00	\$ -
PDC (CEC)Travel Stipend	1,750.00	\$ -	\$ -
Membership Drive Expense	164.00	\$ 110.00	\$ -
Replenish speaker gifts	-	\$ -	\$ -
Miscellaneous Expense	320.00	\$ 54.79	\$ 20.75
Total Expenses	<u>\$ 14,597.00</u>	<u>\$ 3,973.42</u>	<u>\$ 301.62</u>

Change in Fund Balance:	Projected	Actual	Actual
Beginning	6,950.92	6,950.92	\$ 9,695.02
Revenue	14,597.00	6,551.40	\$ 135.50
Expenses	(14,597.00)	(3,973.42)	\$ (301.62)
Net Change	-	2,577.98	\$ (166.12)
Ending	<u>\$ 6,950.92</u>	<u>\$ 9,528.90</u>	<u>\$ 9,528.90</u>

AGA - Your Best Connection for Quality, Affordable Continuing Education



CEC Minutes

December 4, 2014 CEC Meeting Minutes

Approved

12:00 PM – 1st floor conference room – Busch Building, 840 Boonville

Attendance:

Debra Burling, Teresa Allen, Brandie Fisher, Pam Cox, Wayland Mueller, MaryJo Kerringer, Jody Vernon, Greg Drake

Secretary – Brandi Aldridge

Minutes of the October 30, 2014 CEC meeting, presented by e-mail, were passed with a motion from Greg Drake and a second from Pam Cox.

Treasurer- Greg Drake

The Treasurer's report was distributed. Greg reported that the Chapter received the \$1,500 seminar sponsorship donation. There was discussion regarding whether the four \$15 registrations paid from the recruitment stipend should be included as meeting revenue. Greg will discuss at the next CEC meeting whether or not the Treasurer's report should be amended to reclassify \$60 from stipend revenue to meeting revenue.

Education – Teresa Allen and MaryJo Kerringer

Teresa reported that currently six people have signed up to attend the December AGA event on Friday Dec 12.

The January event will take place on January 15 at Panera Bread on National from 8:30 until 10:00 (Breakfast meeting). The speaker will be Sharon Boon and she will present a tax update.

In February, the chapter will meet at Springfield Public Schools and John Everest will discuss the GFOA.

The March chapter meeting will take place at Bass Pro (more details to follow).

Whether to purchase or continue to rent a projection screen for the monthly meetings was discussed. A new screen will cost around \$250. Brandie made a motion to purchase one seconded by Jody and the motion carried. Teresa will make the purchase.

Communication - Brandie Fisher

Brandi is still waiting to hear back from the National office regarding feedback on our CCR.

Dec newsletter deadline for articles is this Friday, Dec 5. Jan newsletter deadline is 5:00 on Jan 6th

Community Service – Pam Cox

Nov/Dec community service project is Toys for Tots; the last day to donate is at the Dec 12 chapter social.

The property tax community service project on Jan 24th and 31st was discussed. Debra indicated that an article describing the project will appear in the Dec newsletter.

Pam proposed raising funds for an animal rescue group as a project for the chapter.

CEC Minutes



December CEC Draft Minutes Cont.

Membership – Jody Vernon

Jody stated that all Membership Recruitment monies have been earmarked including: \$20 for new member gift cards, \$10 for recruiting gift cards, \$60 for non-members attending the 11/20 meeting, \$20 for members bringing guests to the 11/20 meeting, and \$60 for complimentary meeting passes to non-members redeemable through May.

Debra volunteered to check people in and collect money at the December lunch meeting as Jody is unable to attend.

A free membership appreciation event was discussed for next year. Also discussed was that the membership may not be aware that the December event this year is also a member appreciation event. The \$10 charge for attending is only part of the actual cost; the remainder of the cost is being subsidized by the chapter.

Jody handed out a record retention guide. The CEC will use the guide to identify what documents the chapter should be retaining and then come up with a plan at the next meeting to manage those historical documents. Greg proposed the use of a “dropbox” to store documents. He will gather more information and report back at the next CEC meeting.

Old Business – Debra Burling

The chapter plans to develop a Survey Monkey after the holidays to determine membership satisfaction.

Debra will follow up with Tina regarding updating chapter bylaws to reflect changes at National bylaws level.

New Business – Debra Burling

Debra reminded the CEC that the 2nd quarter Chapter Recognition points due date is coming up at end of Dec or early Jan.

Next CEC meeting: January 29th Noon

Meeting adjourned at 12:35 pm

Ozarks Chapter News

Local Ozarks AGA Chapter News!

We had thirteen people in attendance for our annual Member Appreciation Lunch in December at Jimms Steakhouse. Much fun was had—and we appreciate our members for supporting our Chapter. Without our members, we would not be here!

THANK YOU for all of the donations for Toys For Tots!



Ozarks AGA website is back up and running and up to date.

Visit us at: www.ozarksaga.org

The Ozarks Ledger is a publication of the Ozarks Chapter of The Association of Government Accountants

Brandie Fisher, Editor

Deadline for articles: **30th** of each month

Send articles to: bfisher@springfieldmo.gov

Accounting Career Opportunities in the Ozarks

[Ozarks Technical College](#)

Accounting Technician

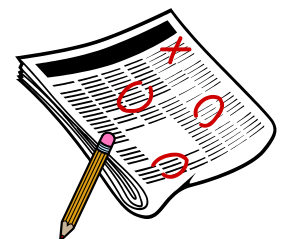
[Missouri State University](#)

Accounting Technician

Accounting Specialist

[Springfield Public Schools](#)

Payroll Analyst



Unique Community Service Opportunity in January

Our Ozarks AGA chapter has a terrific community service opportunity in January and it would be awesome if we had a nice chapter turn out for this event. We will partner with the Southwest Missouri Office on Aging to assist elderly and low income families prepare their MO Property Tax Credit form for calendar year 2014. Here is how it will work:

- The project will take place over two Saturdays in January (the 24th and the 31st) at two locations: South Side Senior Center (2215 S. Fremont) and Northview Senior Center (Doling Park).
- The duration of each day's session will be 5 hours (work either one or both days).
- The task is to help taxpayers complete the simple one page MO-PTC (Property Tax Credit) form by adding income sources (which the taxpayers will provide) and then looking up the income on a table to determine the eligible property tax credit amount.
- Even though we will fill out the MO-PTC form, only the tax payer will sign the form (volunteers do not sign).
- We will need to bring calculators to calculate total income (simple addition from the sources provided by the taxpayer).
- We will make a copy of the completed MO-PTC form and then give the original and the copy to the taxpayer.
- We will receive training 15 minutes prior to the start of the sessions at the locations.

The task is so easy that each volunteer will be able to process several MO-PTC forms in an hour. The Office on Aging coordinators say there are several thousand people in our community that need this assistance. Other volunteers besides our AGA chapter will be assisting on these two Saturdays as well.

Won't you please consider donating a few hours of your time and your mathematical expertise to help with this very worthy cause? This is a perfect opportunity for our AGA chapter to perform community service using our professional skills. The Southwest Missouri Office on Aging will need a final volunteer count by the first or 2nd week in January (and they will be extremely grateful for any assistance from us). If you want to be a part of this project or if you have questions regarding this opportunity, please e-mail AGA Ozarks Chapter President Debra Burling at: dburling@spsmail.org

