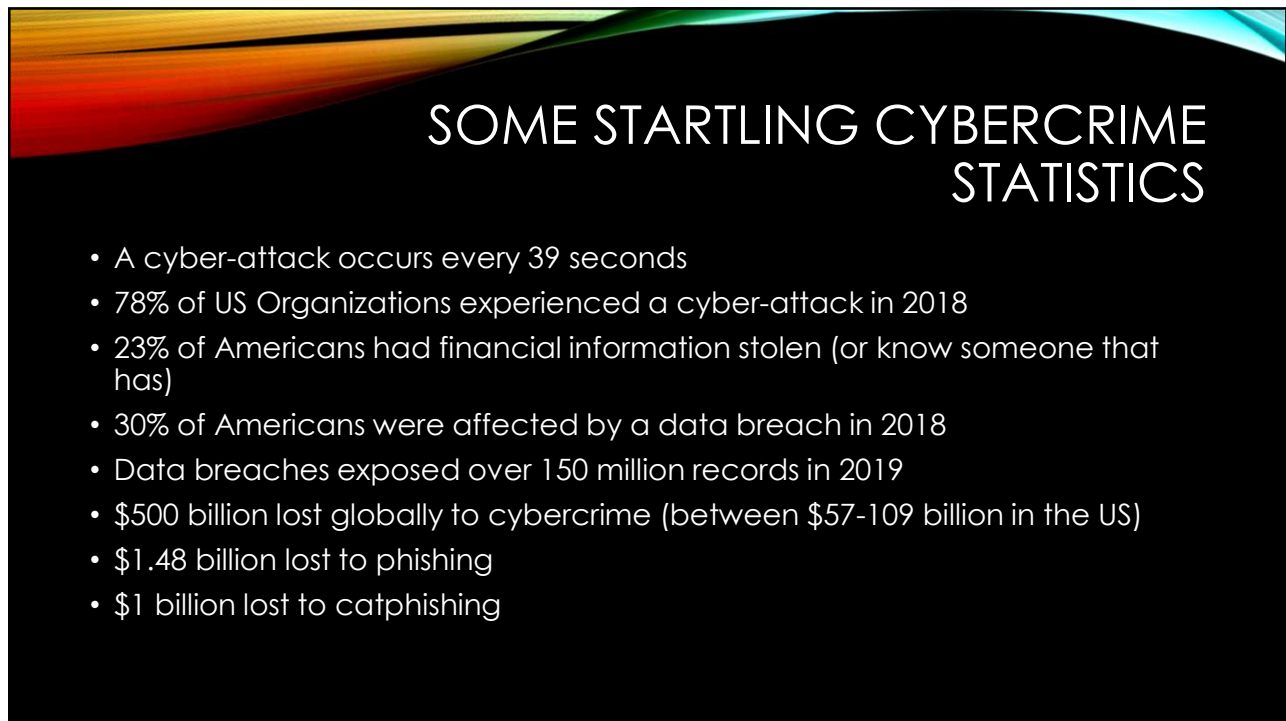


1



2

## COMMON TYPES OF CYBER-CRIME

- Phishing
- Spoofing
- Data Breaches



3

## PHISHING

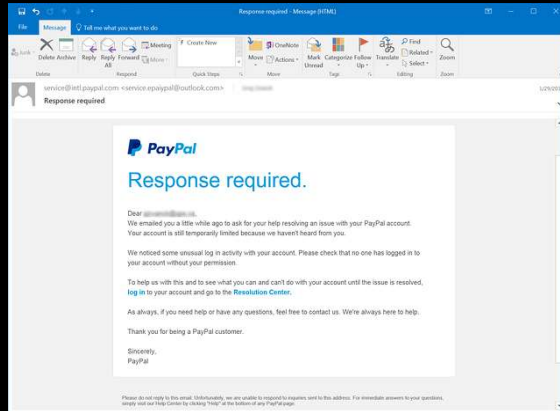
- Attacker creates phony emails or webpages
- Phishing emails seem trustworthy
- Monitor and collect data provided by victims
- Use collected data to commit fraud



4

## PHISHING – WHAT CAN YOU DO?

- Do not click links/attachments in emails you are sent (unless you're absolutely certain the link is legitimate)
- Double check the senders email address.
- Prescribe company mandated fishing awareness training



5

## SPOOFING

- Replicates a website in order to dupe rube
- Will use brand logos, interfaces, styles and even *EXTREMELY* similar domains
- Monitors and collects data provided by victims
- Use collected data to commit fraud



6

## SPOOFING - WI-FI

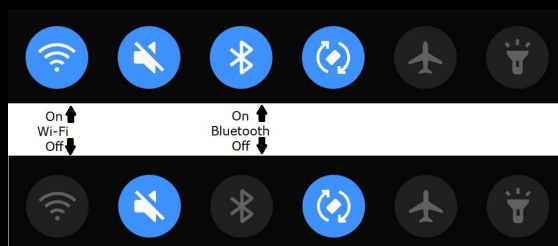
- Attackers on the same network can access everything you do while connected.
- Attackers can reroute you to their spoofed webpages if connected to the same network
- This can be an issue while out in public or even at home.



7

## SPOOFING – WHAT CAN YOU DO?


- Verify all links and attachments
- Don't access sensitive information while connected to public Wi-Fi.
- Disable Wi-Fi and Bluetooth while not connected to a trusted network.
- Change home Wi-Fi passwords after installation (and whenever you give your Wi-Fi to a third party)



8

## DATA BREACHES

- Attackers gain access to large amounts of data from businesses
- Average cost of \$3.86 million
- Out-of-date software can be exploited
- Weak passwords are easy to guess
- Malware can exploit otherwise secure systems



9

## DATA BREACHES – WHAT CAN YOU DO?

- Raise awareness to phishing and spoofing attacks
- Keep company software up-to-date
- Monitor financial records
- Back up files
- Use high-quality anti-virus software
- Get off social media
- Create strong passwords



10

## PASSWORDS – HOW THEY WORK

- Passwords aren't stored as plaintext
- Hashes are always the same length
- Attackers will have access to the hash (Pink) and maybe the hash function (yellow)
- Hashes can't be used to retrieve passwords
- Guessing can be used to recreate and match the hashes

Fox	cryptographic hash function	DFCD 3454 BBEA 788A 751A 696C 24D9 7009 CA99 2D11
The red fox jumps over the blue dog	cryptographic hash function	0086 46BB FB7D CBE2 8234 ACC7 6CD1 90B1 EB6E 3AB8
The red fox jumps over the blue dog	cryptographic hash function	8FD8 7558 7851 4F32 D1C4 76B1 79A9 0DA4 AEF6 4811
The red fox jumps over the blue dog	cryptographic hash function	FCD3 7FDB 5AF2 C6FF 9151 D401 C0A9 7D9A 46AF FB41
The red fox jumps over the blue dog	cryptographic hash function	8ACA D682 D588 4C75 4BF4 1799 7D88 BCF8 92B9 6A60

11

## PASSWORDS

- Dictionary attacks can be completed in seconds.
- Using only lowercase letters creates a weak password.
- The longer the password the better.
- Avoid using things that are commonly known about you.
- Avoid reusing passwords.

**TOP 20**  
MOST COMMON  
PASSWORDS

(as a percentage of all passwords)

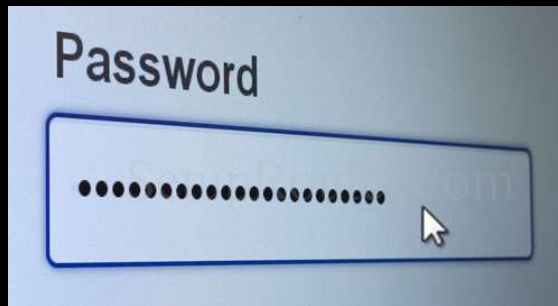
1. 123456	4.1%	11. login	0.2%
2. password	1.3%	12. welcome	0.2%
3. 12345	0.8%	13. loveme	0.2%
4. 1234	0.6%	14. hottie	0.2%
5. football	0.3%	15. abc123	0.2%
6. qwerty	0.3%	16. 121212	0.2%
7. 1234567890	0.3%	17. 123654789	0.2%
8. 1234567	0.3%	18. flower	0.2%
9. princess	0.3%	19. password	0.2%
10. solo	0.2%	20. dragon	0.1%

12



## HOW TO REMEMBER PASSWORDS

- Substitute characters with special characters i.e. TacoTrucks becomes T@c0Truck\$
- Use a favorite song.  
"S,d,s'ed,ous.O,n,t'shRRr"
- Make it something meaningful to you. "11988msBwbalw30"



13

## REFERENCES

- "19 Alarming Cybercrime Statistics For 2020." *BroadbandSearch.net*, [www.broadbandsearch.net/blog/alarming-cybercrime-statistics](http://www.broadbandsearch.net/blog/alarming-cybercrime-statistics).
- Thom VanHorn - Head of Marketing | BlueVoyant. "Top 5 Cybercrimes and Prevention Tips." *Home Page*, [www.bluevoyant.com/blog/top-5-cybercrimes-and-prevention-tips](http://www.bluevoyant.com/blog/top-5-cybercrimes-and-prevention-tips).
- NortonOnline. "What Is a Data Breach?" *Official Site*, [us.norton.com/internetsecurity-privacy-data-breaches-what-you-need-to-know.html](http://us.norton.com/internetsecurity-privacy-data-breaches-what-you-need-to-know.html).
- Kohgadai, Ajmal. "How to Create a Strong Password You Actually Remember - McAfee MVISION Cloud." *Skyhigh*, Skyhigh Networks, 6 Dec. 2016, [www.skyhighnetworks.com/cloud-security-blog/how-to-create-a-strong-password-you-actually-remember/](http://www.skyhighnetworks.com/cloud-security-blog/how-to-create-a-strong-password-you-actually-remember/).
- Weiss, Bob. "How Fast Can Your Password Be Cracked?" *WyzGuys Cybersecurity*, 5 Mar. 2015, [wyzguyscybersecurity.com/how-fast-can-your-password-be-cracked/](http://wyzguyscybersecurity.com/how-fast-can-your-password-be-cracked/).

14