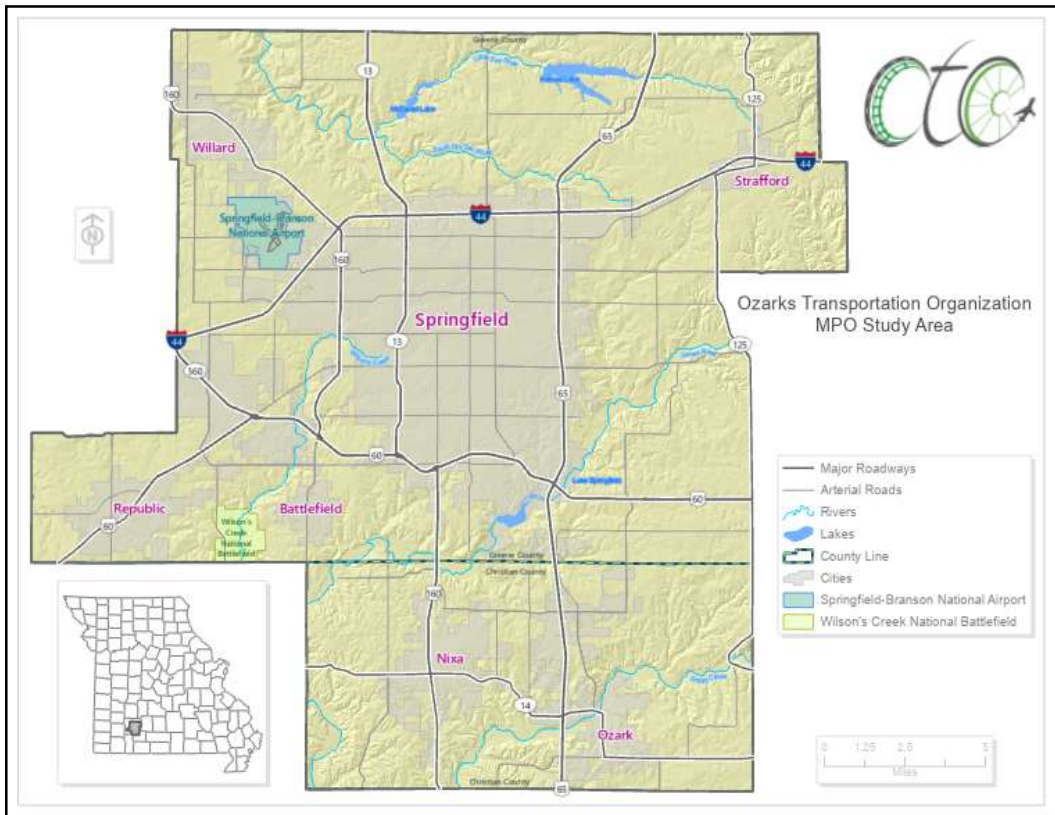


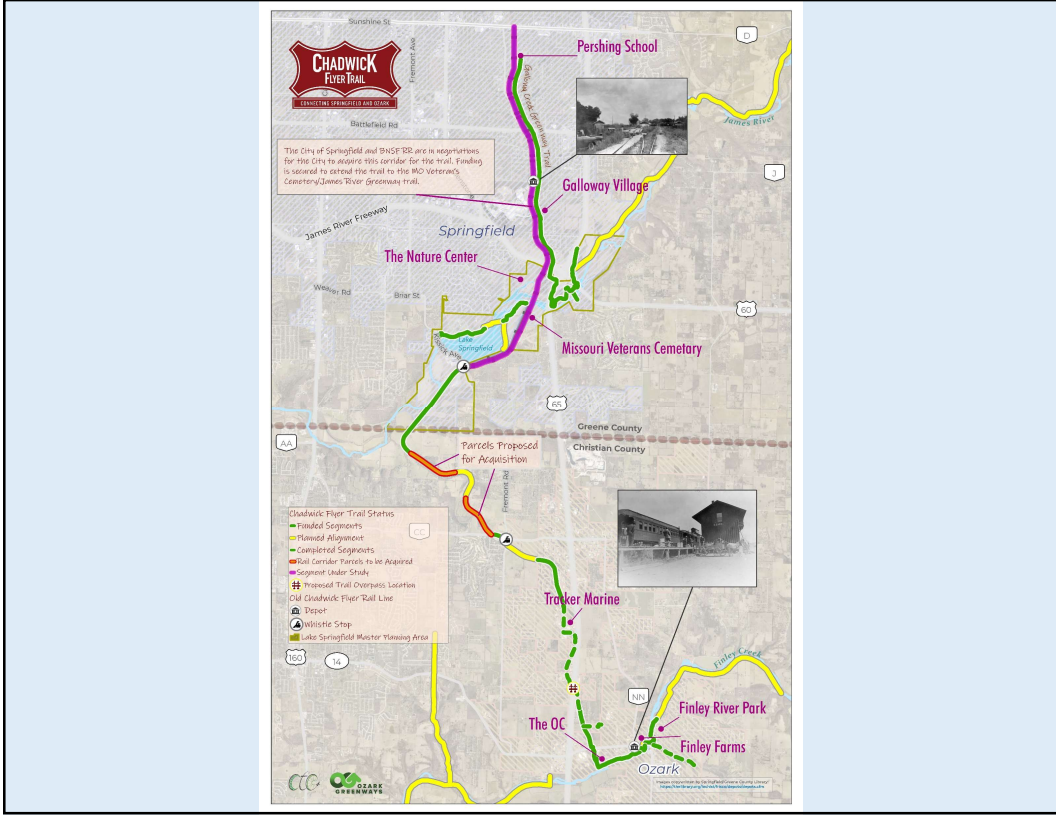
Regional Growth Trends

Dave Faucett, GIS Analyst
The Ozarks Transportation Organization

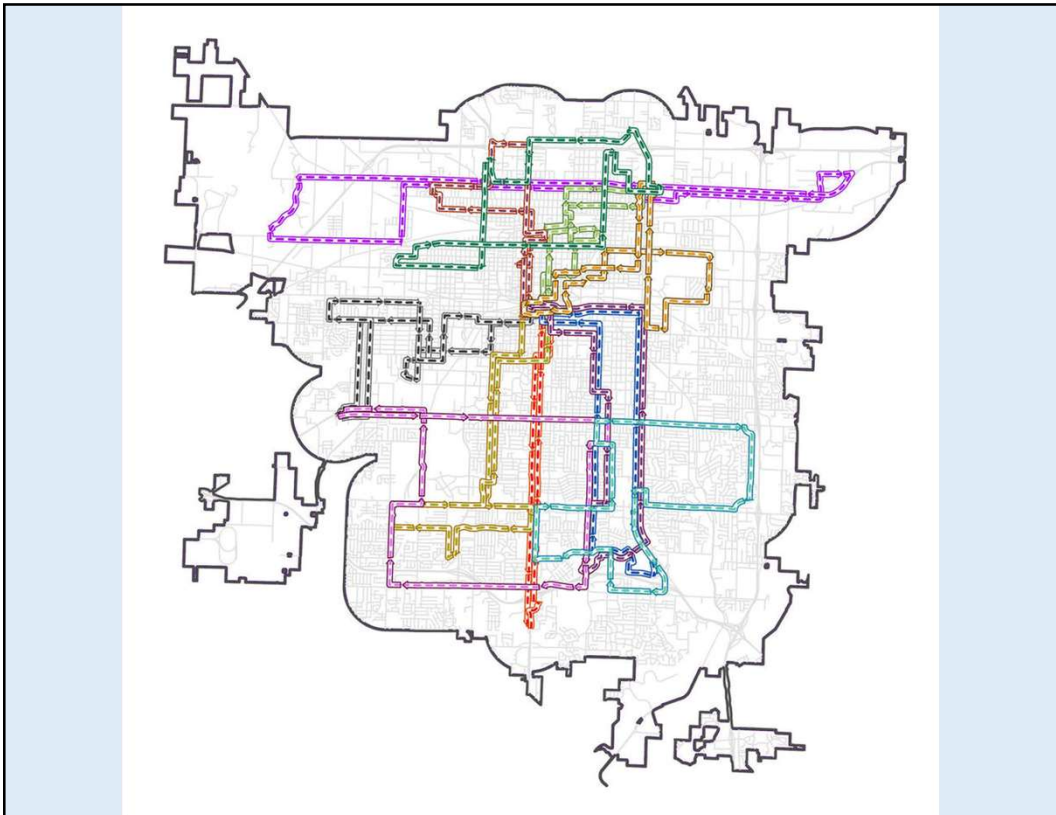
1



2

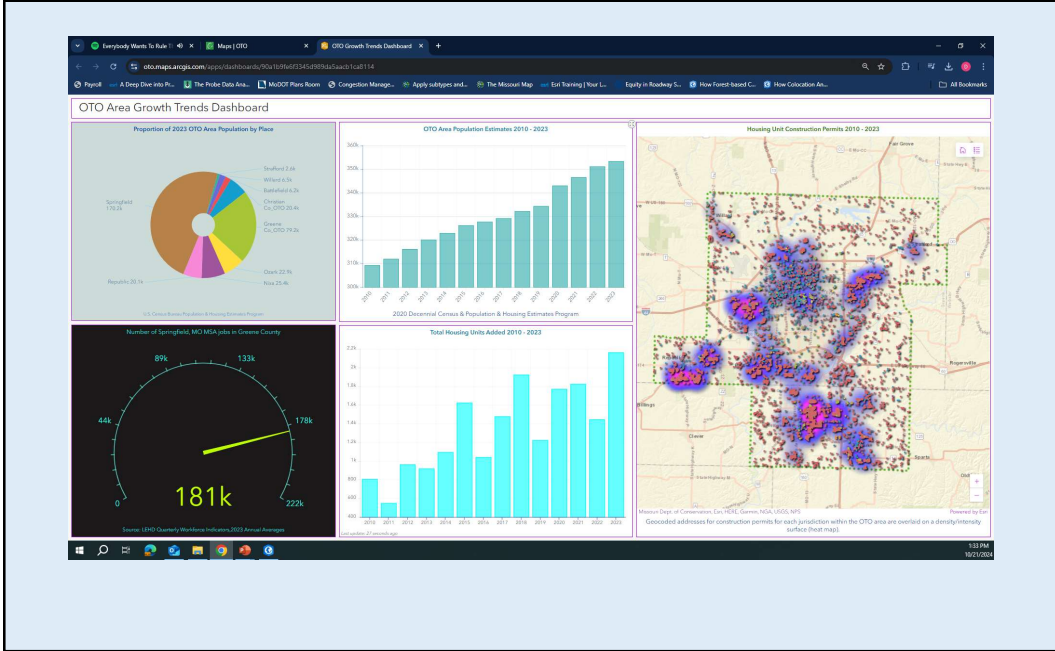


3

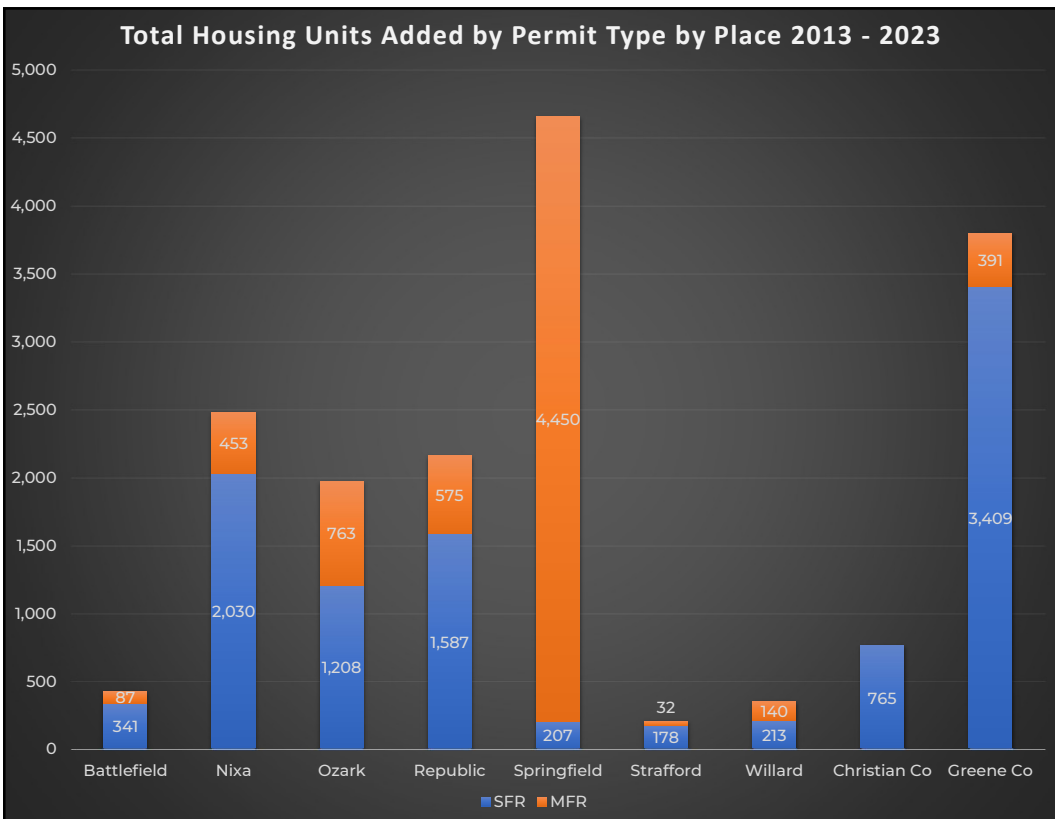


4

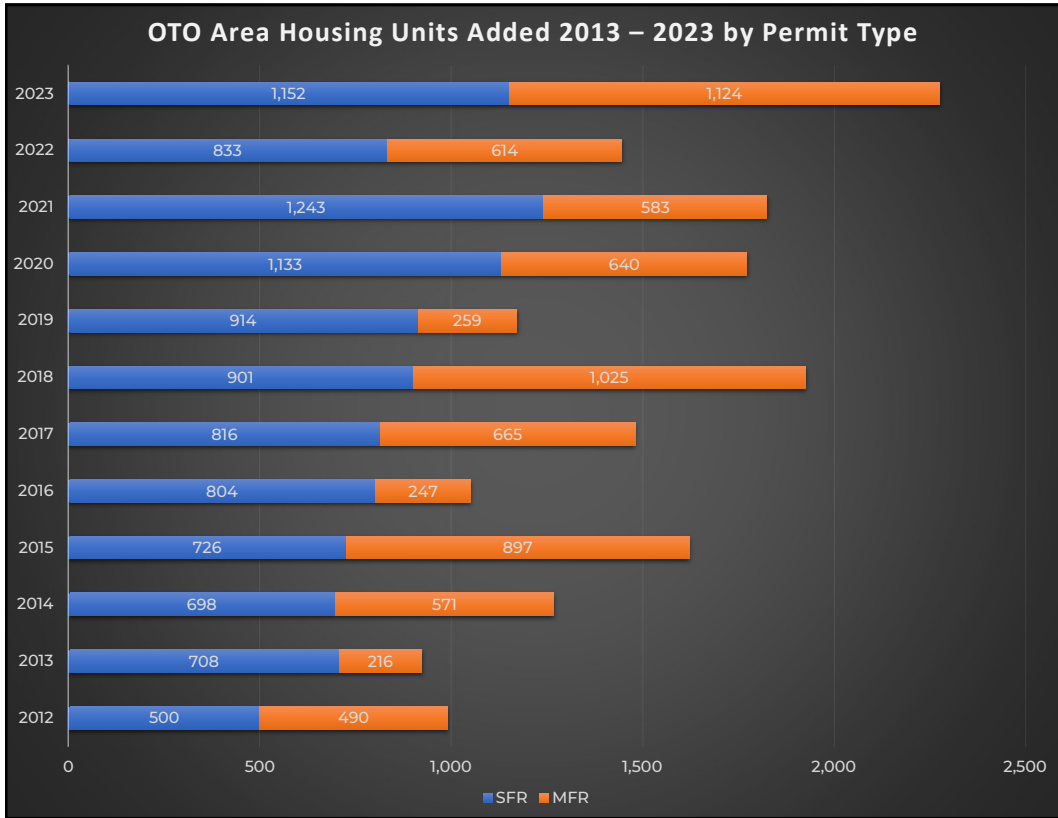
OTO Growth Trends Dashboard



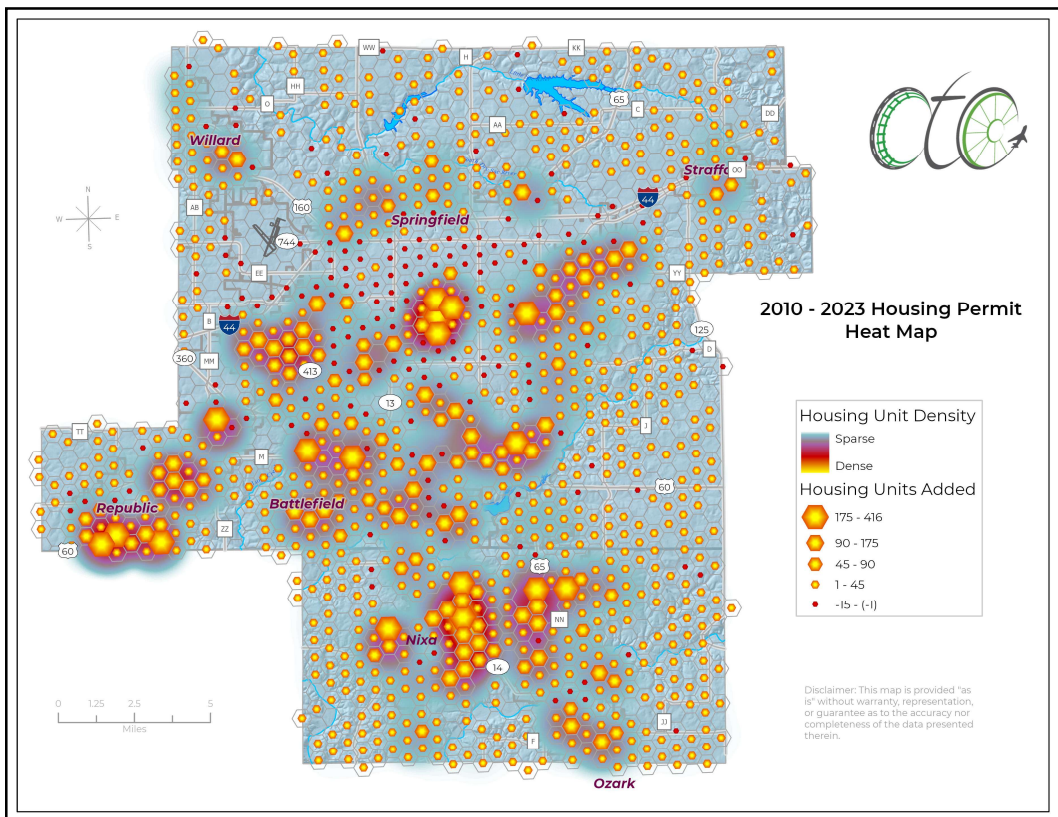
5



6

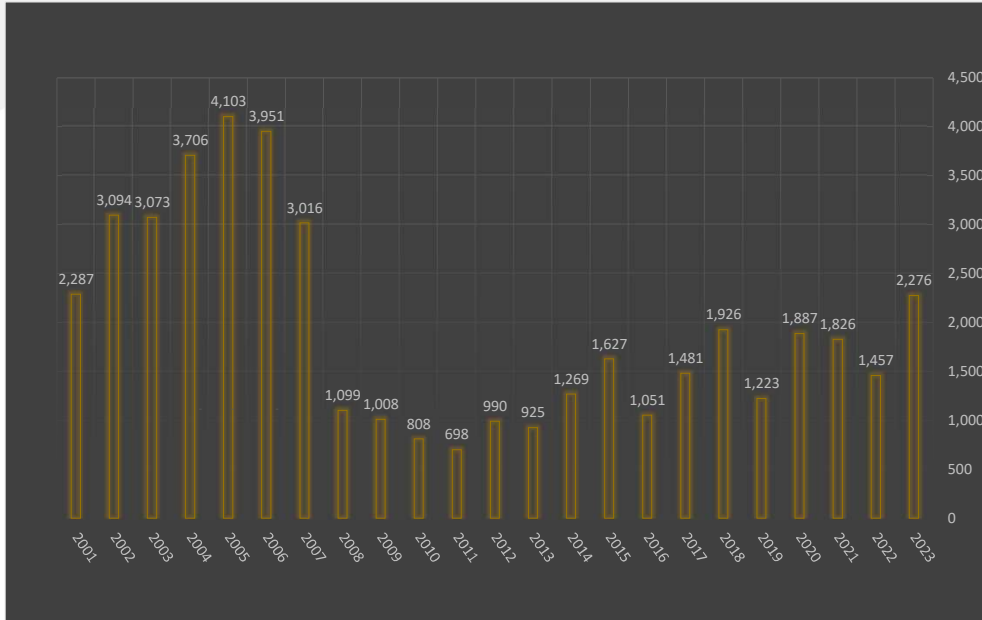


7



8

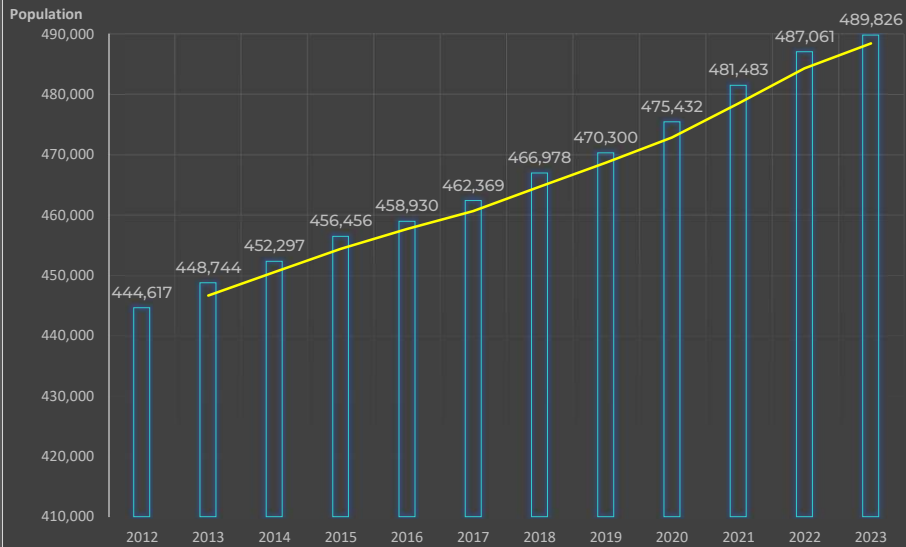
OTO Area Permit Activity 2001 - 2023



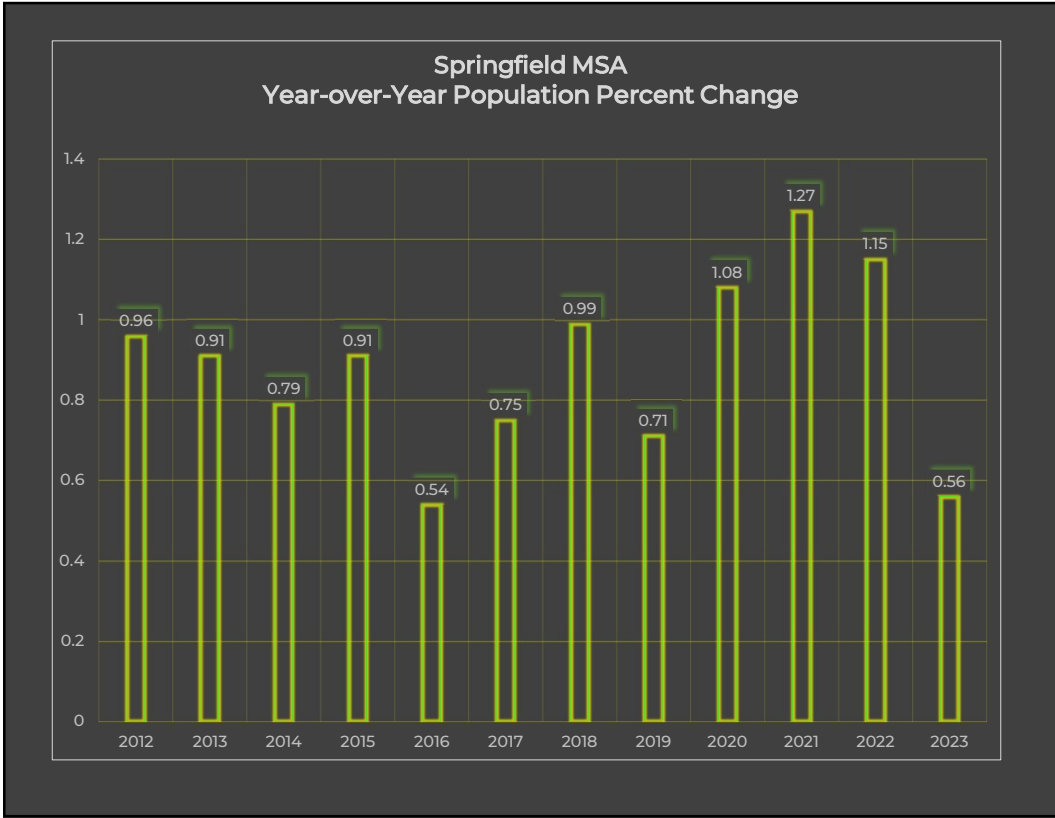
9

Springfield MSA Population (Greene, Christian, Webster, Polk and Dallas Counties)

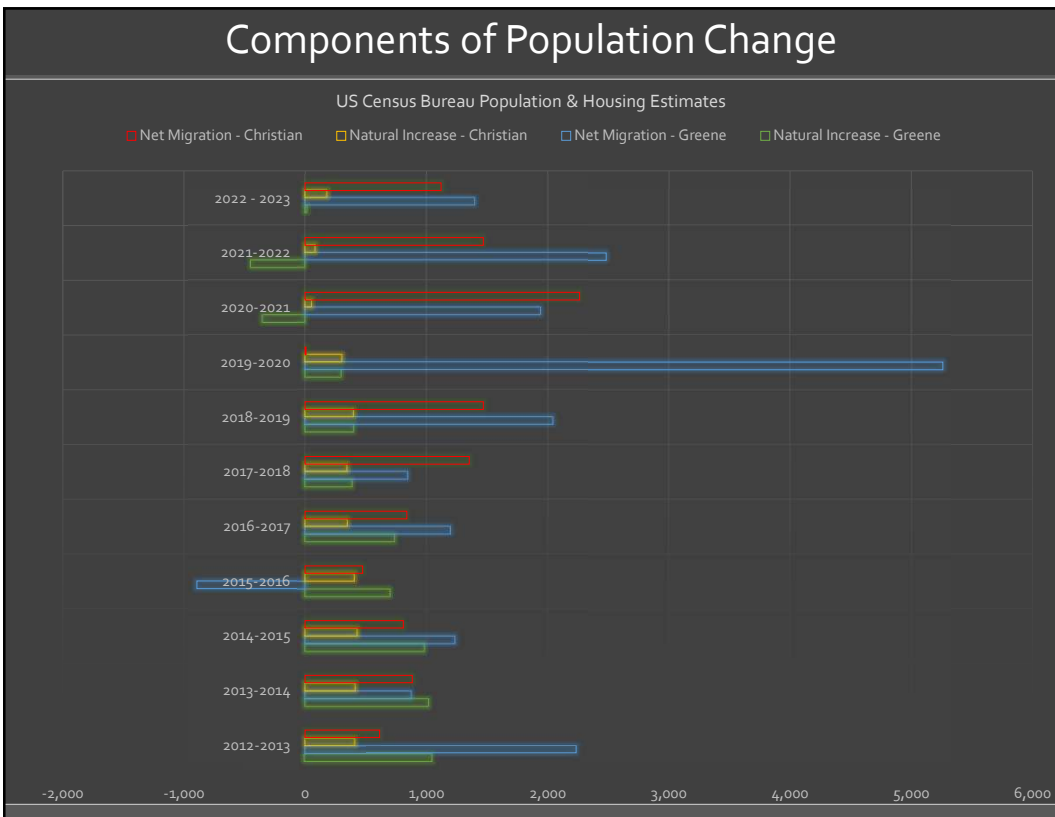
Source: U.S. Census Bureau Population Estimates Program & 2020 Decennial Census



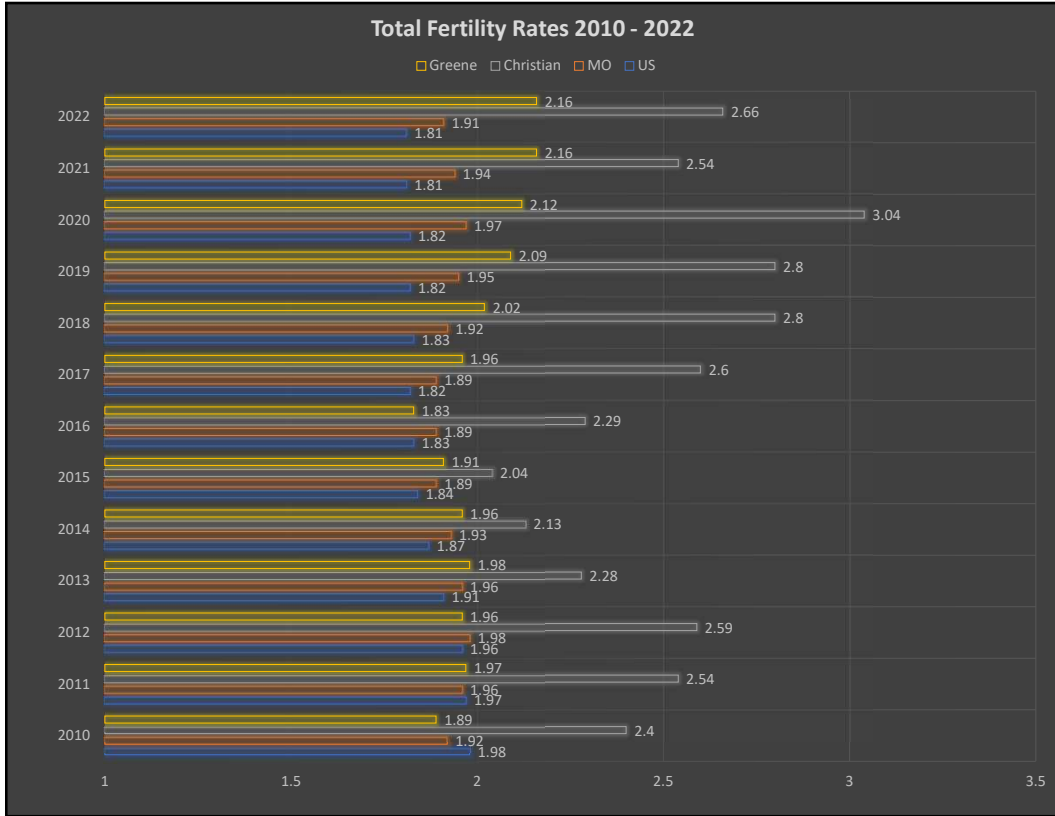
10



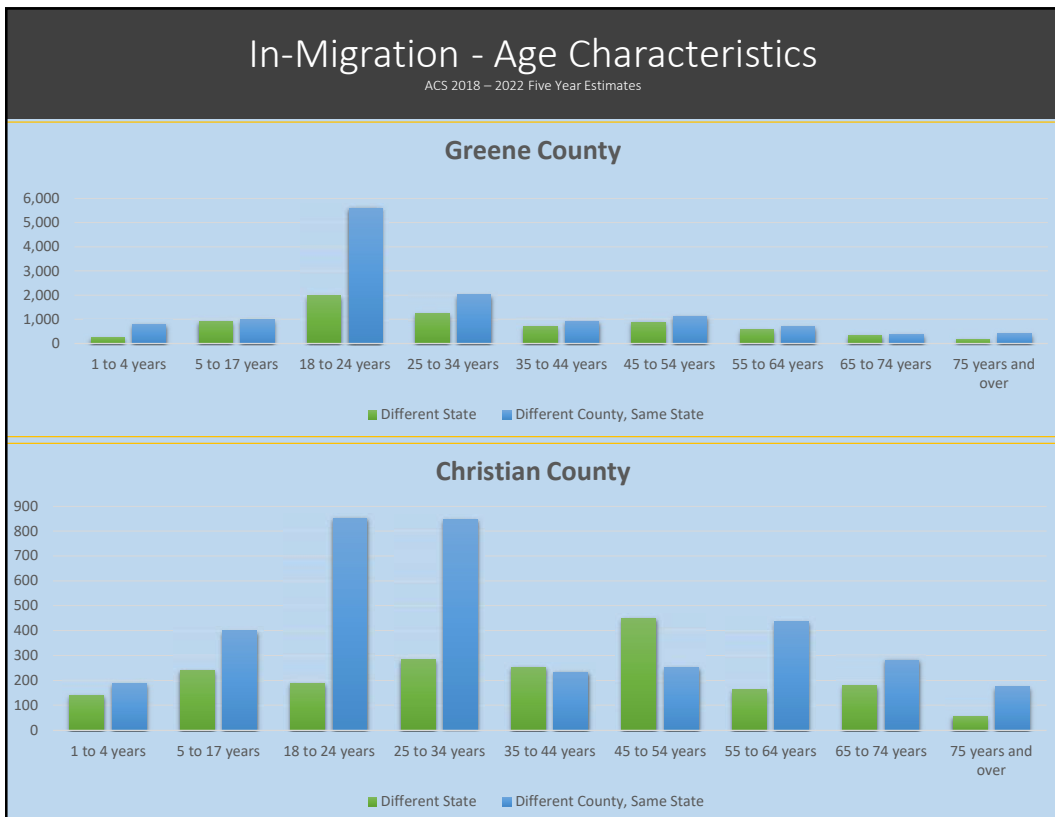
11



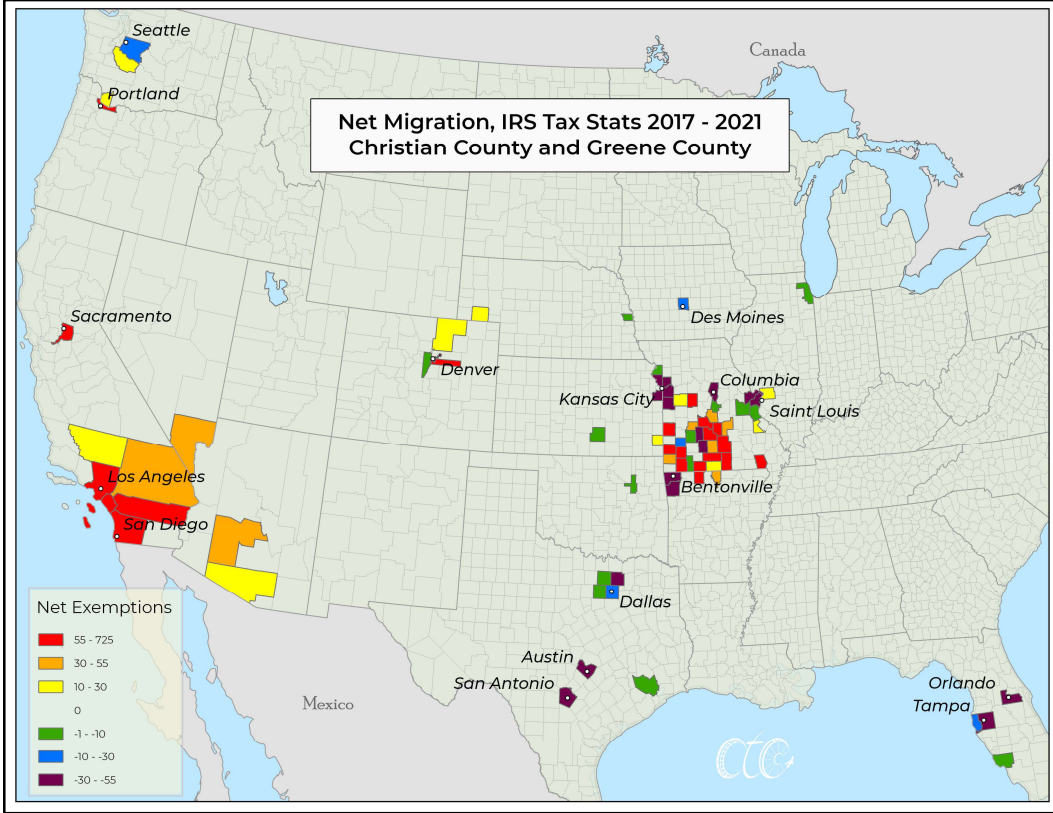
12



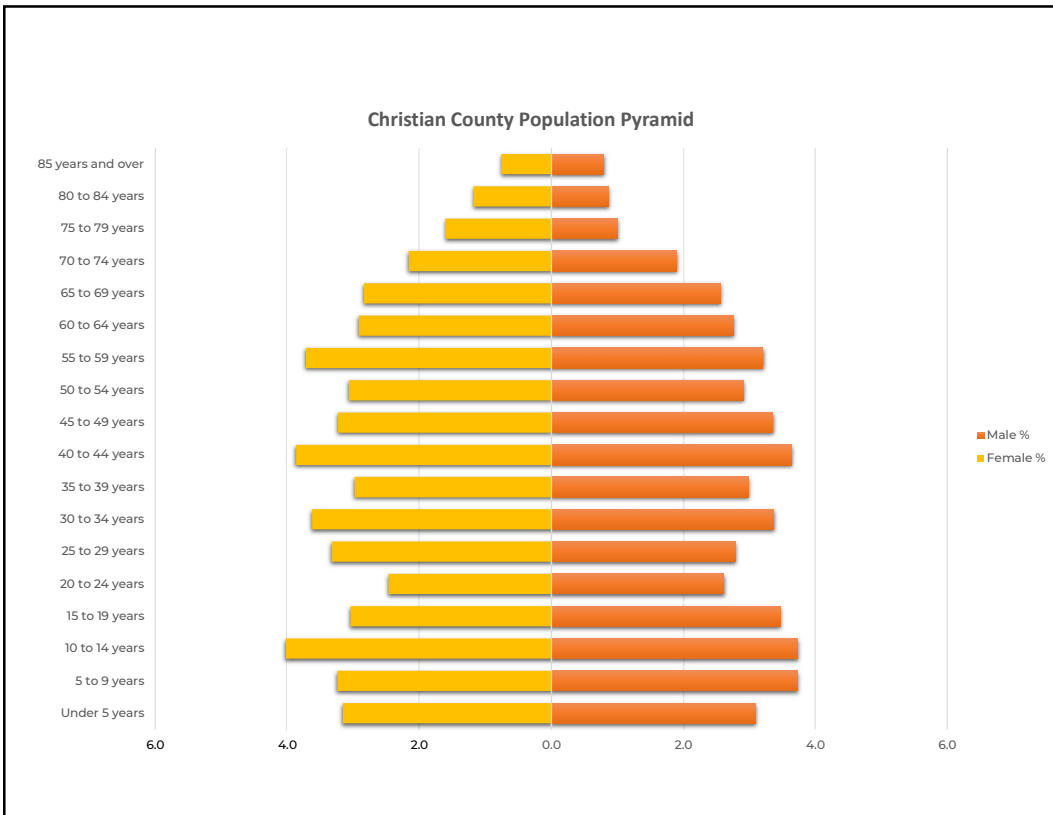
13



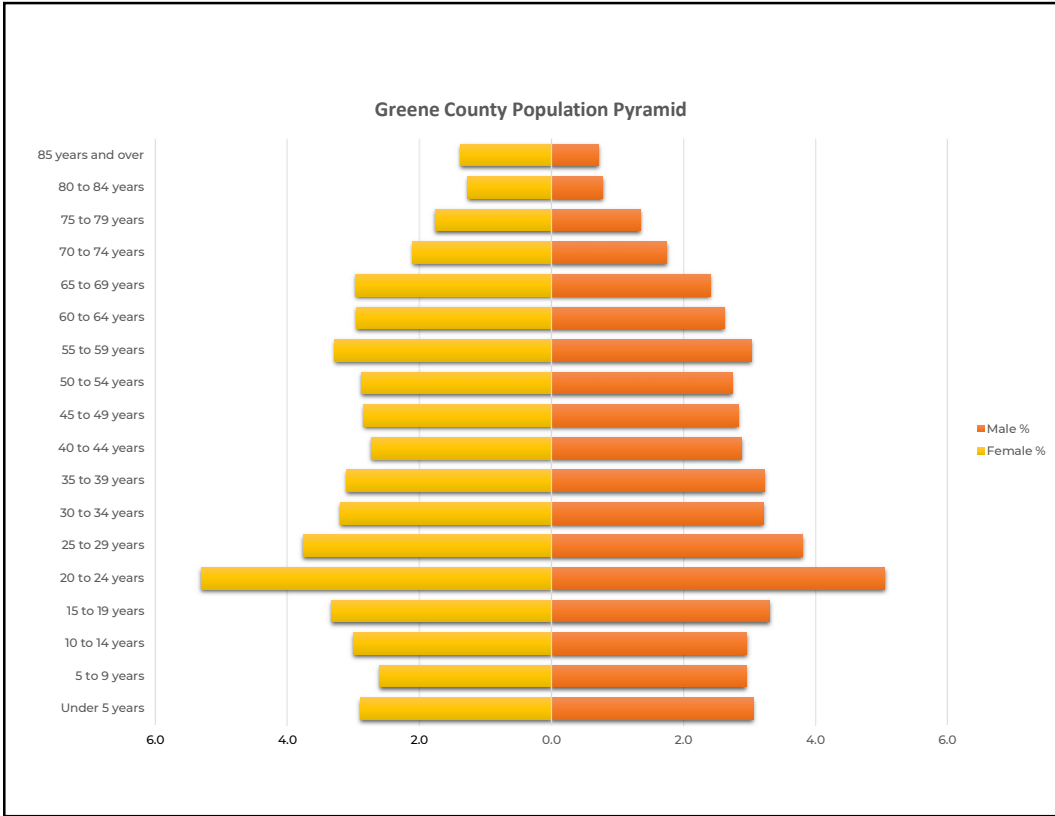
14



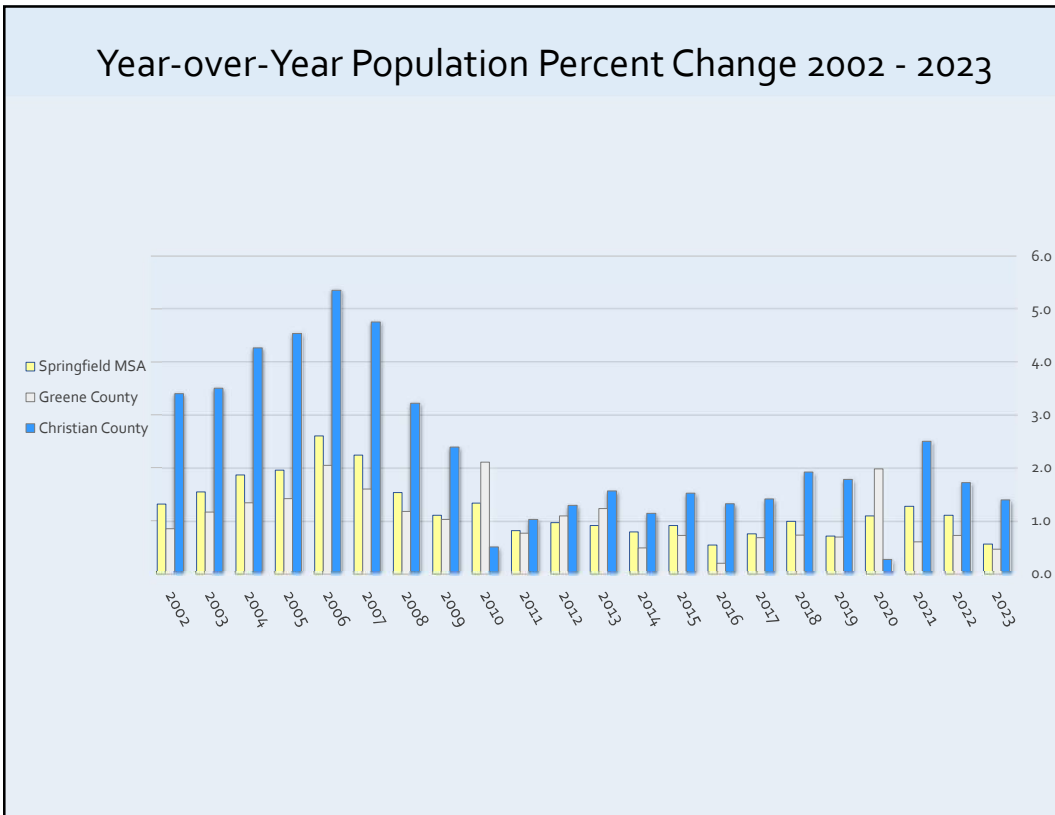
15



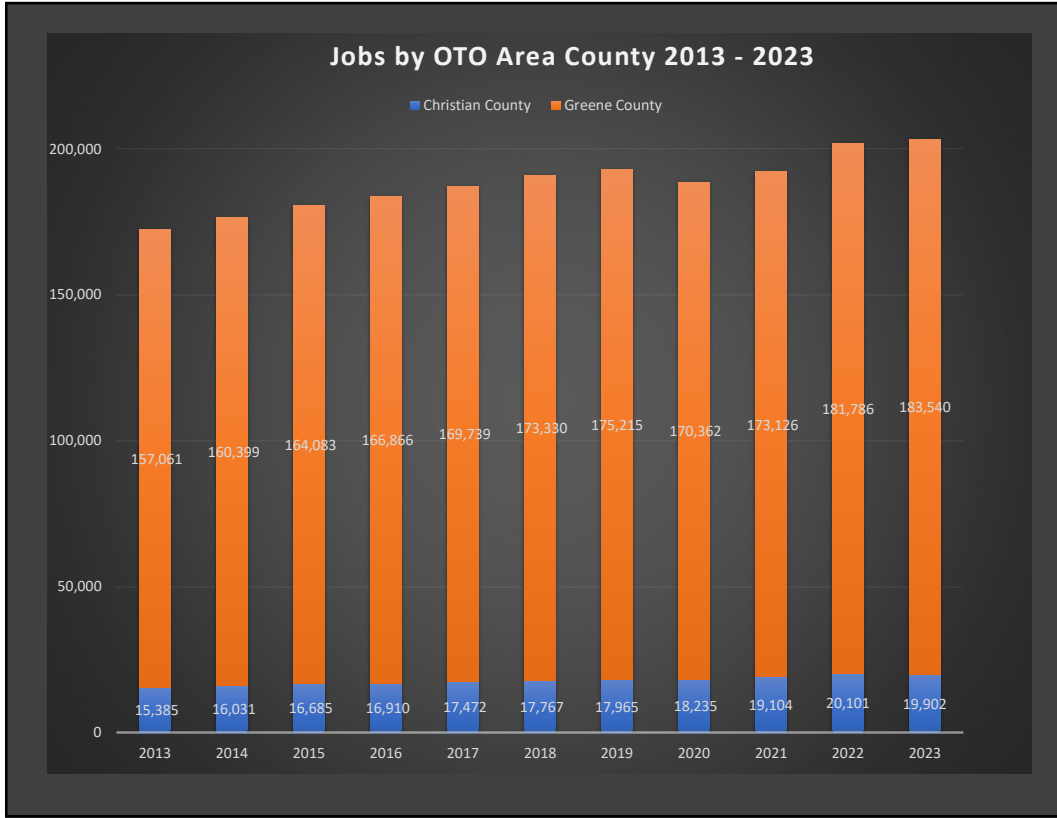
16



17



18

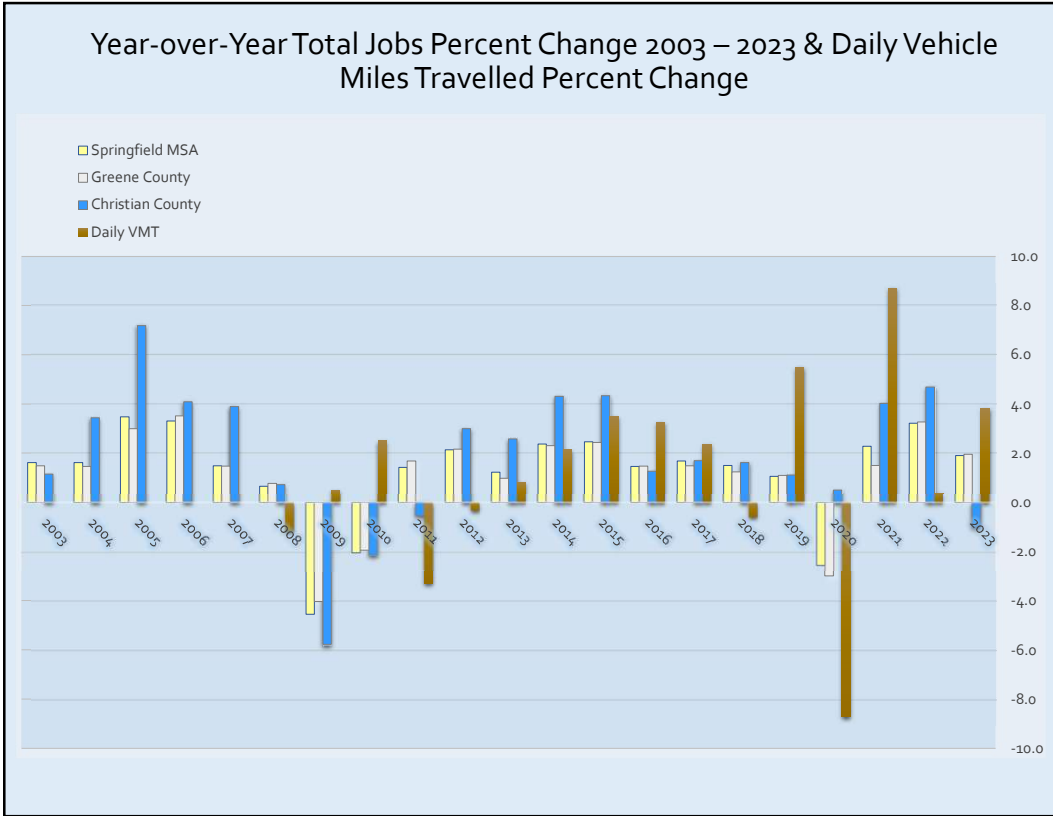


19

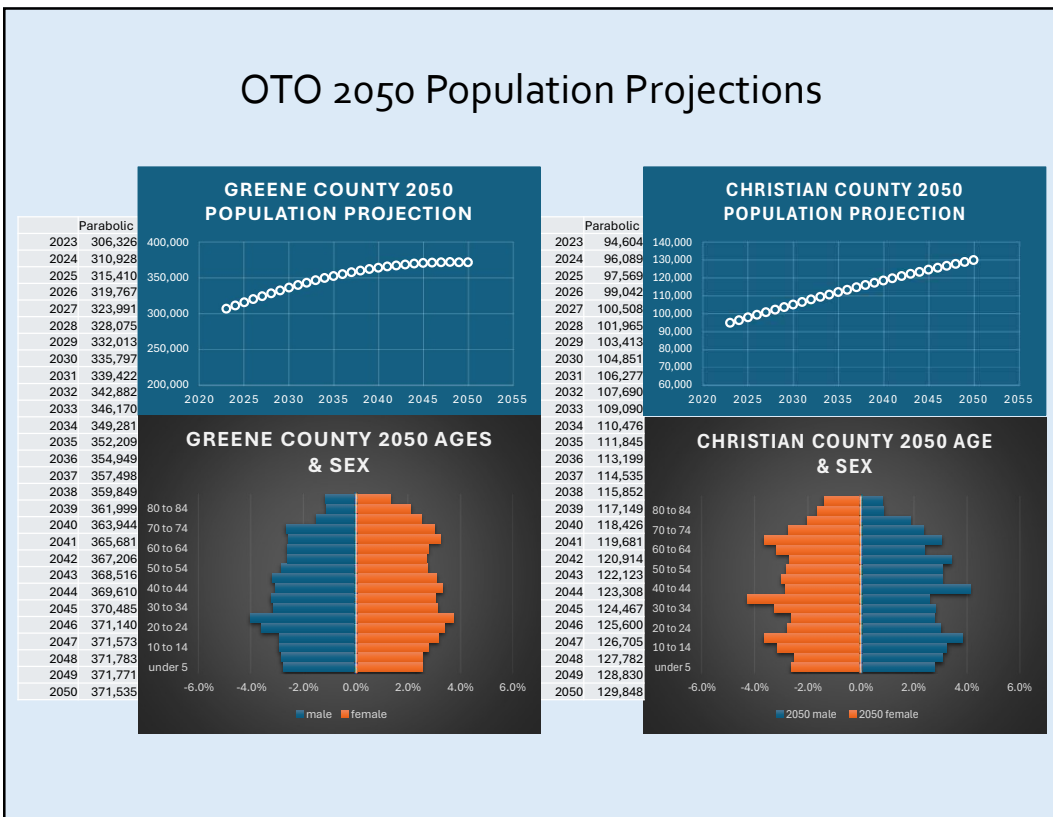
Springfield MSA Workforce Change by Industry 2012 – 2022, American Community Survey 5-yr Estimates

	2012	2022	Difference	% Change
Full-time, year-round civilian employed population 16 years and over	136,075	161,180	25,105	18.4
Agriculture, forestry, fishing and hunting, and mining:	1,668	1,738	70	4.2
Agriculture, forestry, fishing and hunting	1,468	1,544	76	5.2
Mining, quarrying, and oil and gas extraction	200	194	-6	-3.0
Construction	8,644	10,784	2,140	24.8
Manufacturing	14,618	17,299	2,681	18.3
Wholesale trade	5,549	5,236	-313	-5.6
Retail trade	16,928	18,607	1,679	9.9
Transportation and warehousing, and utilities:	9,690	10,493	803	8.3
Transportation and warehousing	7,829	8,842	1,013	12.9
Utilities	1,861	1,651	-210	-11.3
Information	2,870	2,266	-604	-21.0
Finance and insurance, and real estate and rental and leasing:	10,173	12,102	1,929	19.0
Finance and insurance	7,797	9,486	1,689	21.7
Real estate and rental and leasing	2,376	2,616	240	10.1
Professional, scientific, and management, and administrative and waste management services:	10,776	16,125	5,349	49.6
Professional, scientific, and technical services	6,025	9,727	3,702	61.4
Management of companies and enterprises	293	292	-1	-0.34
Administrative and support and waste management services	4,458	6,106	1,648	37.0
Educational services, and health care and social assistance:	34,080	40,192	6,112	17.9
Educational services	11,711	14,008	2,297	19.6
Health care and social assistance	22,369	26,184	3,815	17.1
Arts, entertainment, and recreation, and accommodation and food services:	7,939	9,975	2,036	25.6
Arts, entertainment, and recreation	1,425	1,900	475	33.3
Accommodation and food services	6,514	8,075	1,561	24.0
Other services, except public administration	7,171	8,082	911	12.7
Public administration	5,969	6,187	218	3.7

20



21



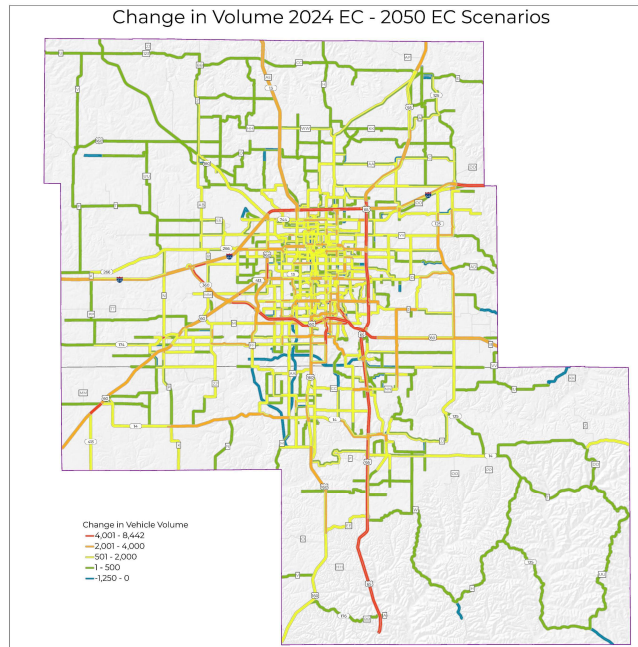
22

2050 Travel Demand Model Inputs

People & Housing	2050 Change	Jobs	2050 Change
Population	104,976	Employment	69,122
SFR Units	32,795	Ag/Mining	65
MFR Units	12,072	Whls/Trans/Utilities	6,684
Group Quarters	4,507	Big Box Retail	(319)
		Retail	(350)
		Manufacturing	4,882
		Construction	2,271
		Office	12,967
		Education	6,210
		Healthcare	27,493
		Food/Entertainment	9,219

23

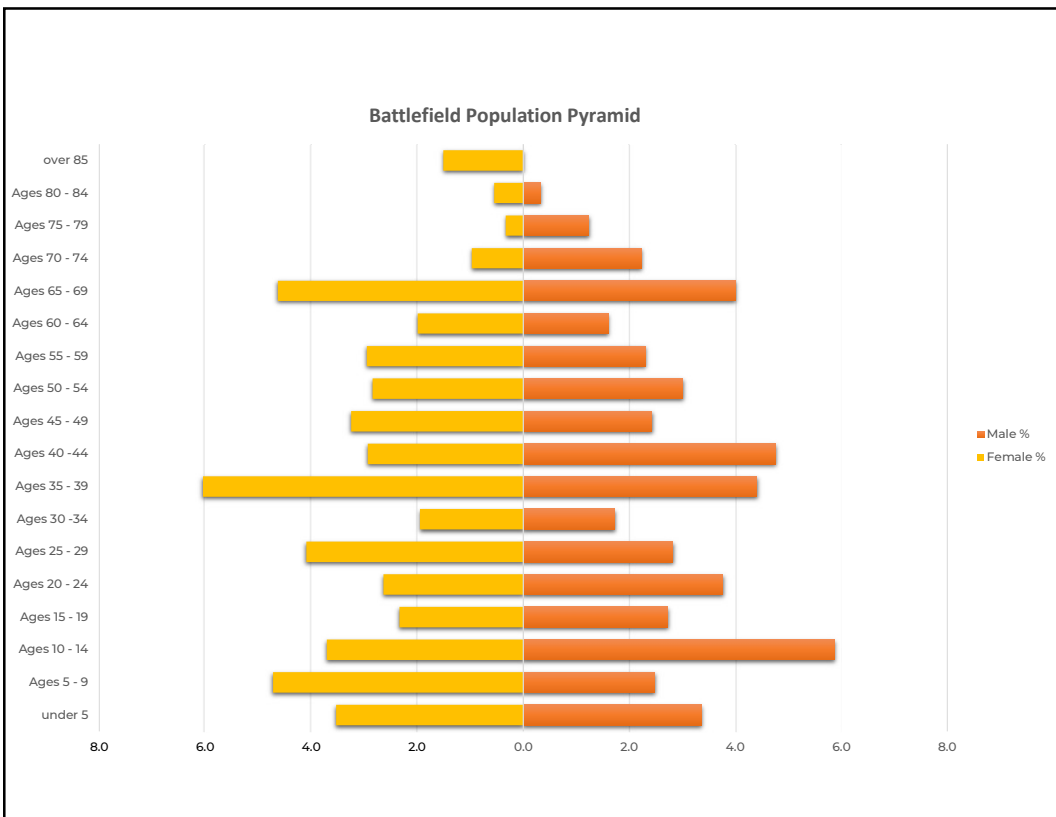
Change in Volume 2024 EC - 2050 EC Scenarios



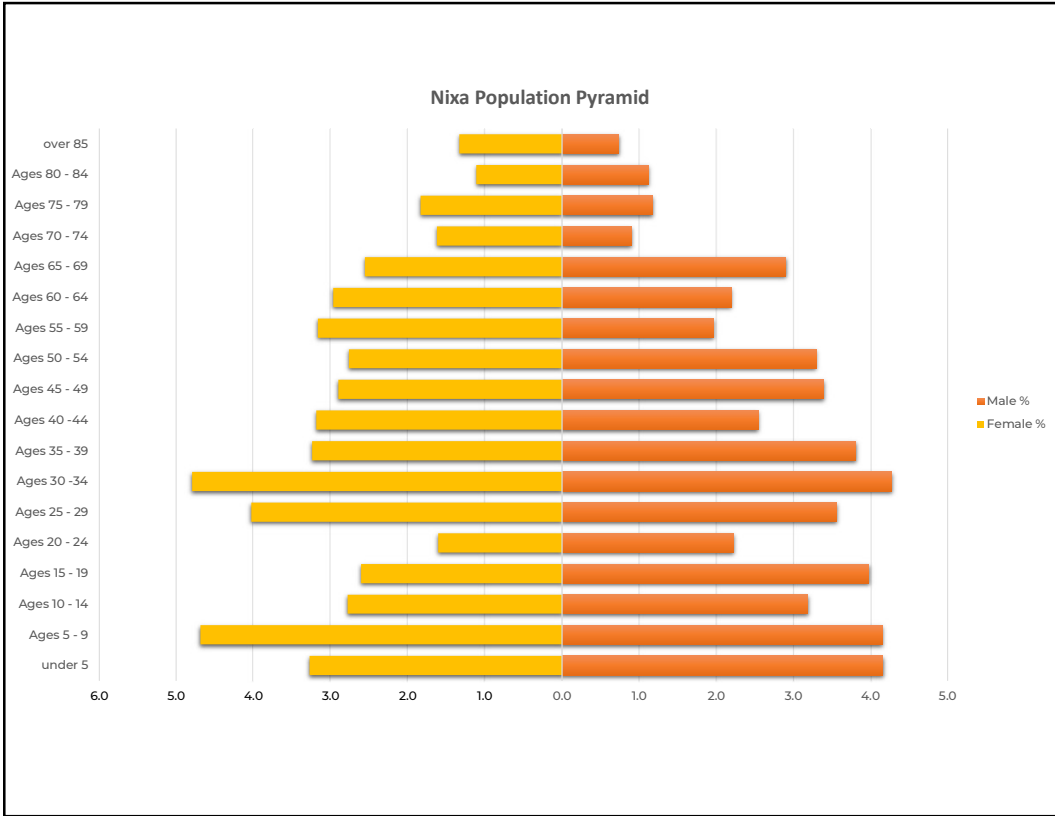
24



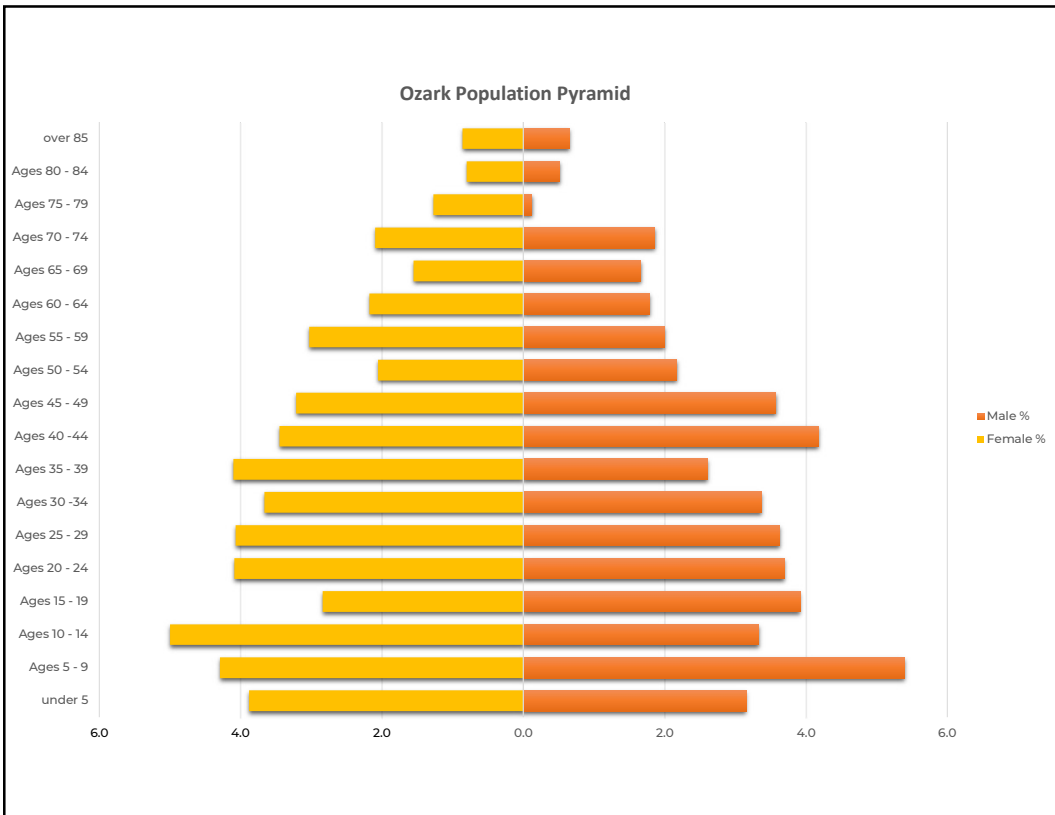
25



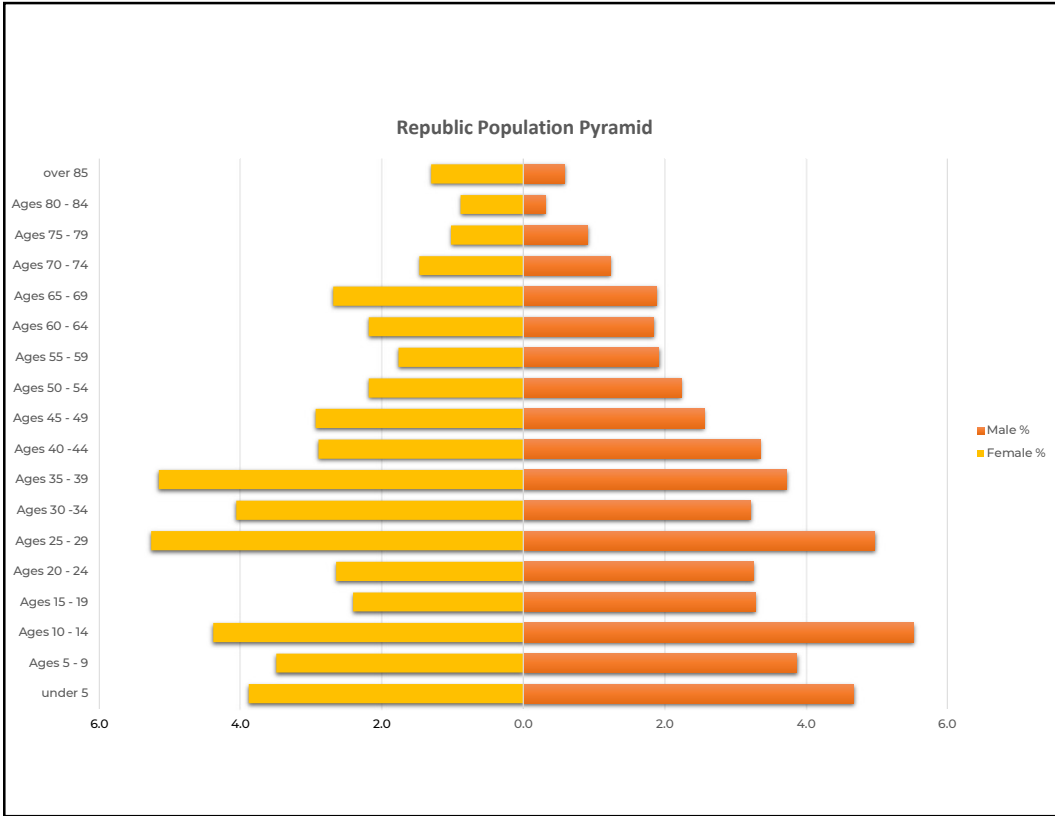
26



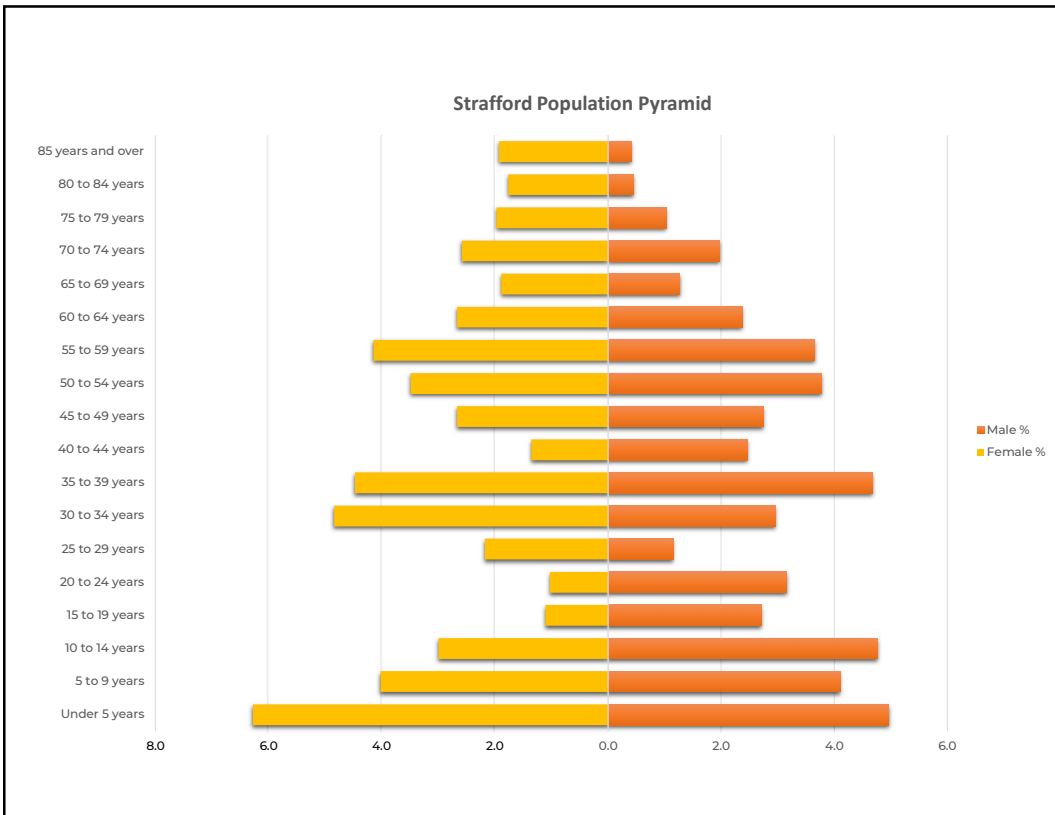
27



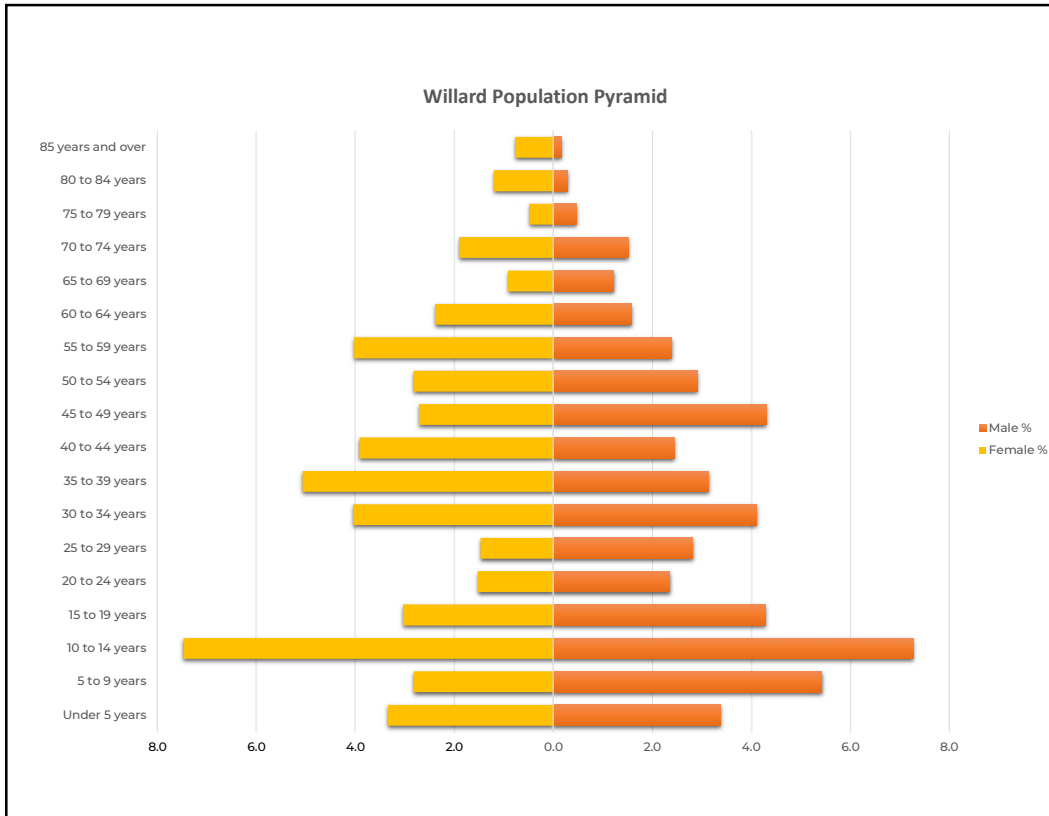
28



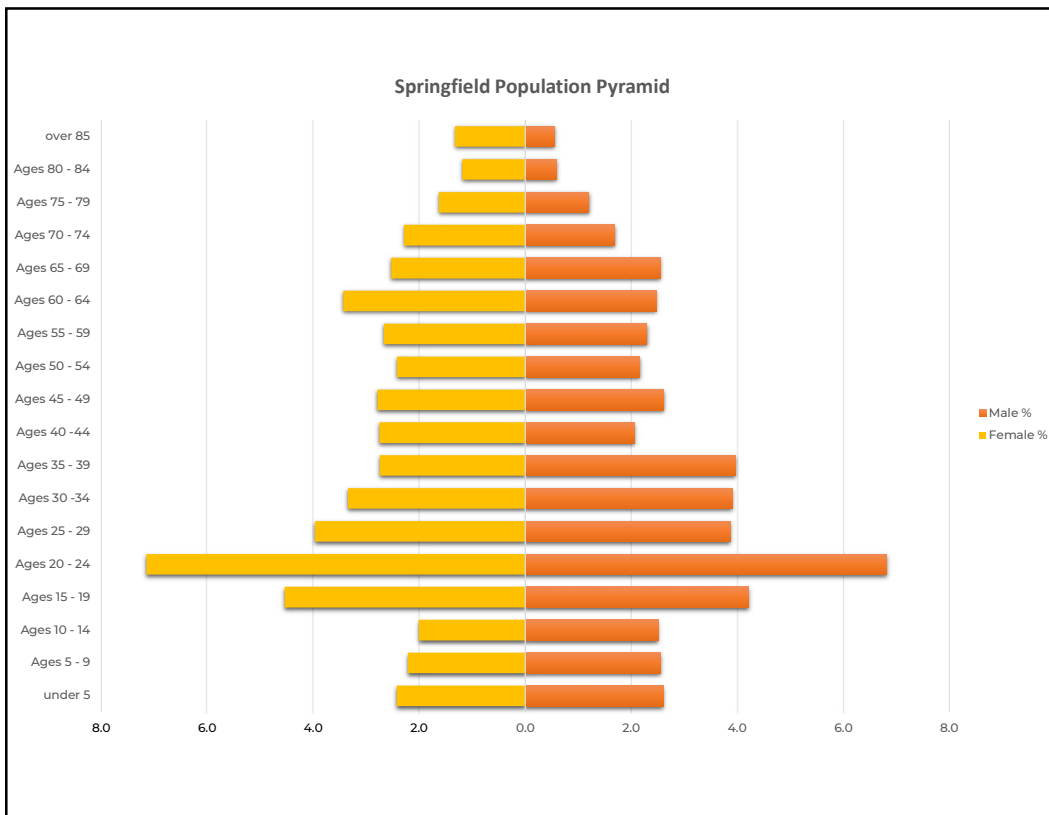
29



30



31



32