

# A Report to Our Members 2020-2021



- Skill Building
- Career Advancement
- Networking Events
- Professional Certification
- Publications Access & Authoring
- Ongoing Education



## REPORT CONTENTS

1. Who We Are
2. Programs & Activities
3. Chapter Financials
4. Goals & Challenges

**Who We Are** The Seattle Chapter is a chartered affiliate of the Association of Government Accountants (AGA), a member organization for government financial management professionals. We lead and encourage changes benefiting our field and all citizens. From undergraduate students to industry experts, our membership includes professionals from all government sectors, academia, non-profit organizations and the private sector.

## Our Mission

The Association's goals and objectives are detailed in its strategic plan which is published via the AGA website ([agacgfm.org](http://agacgfm.org)). The Seattle Chapter's goal is to provide an atmosphere in which its members can improve their skills, participate in discussions to improve government accountability, and participate in events that bring community awareness to the Association.

**Message from the Board** We are pleased to share chapter outcomes from the past year, and our challenges and goal tracking to the 2021-2022 program year. The Seattle chapter strives to meet our mission. We are proud this year to collect membership survey data already shaping our monthly meetings and events, trainings/CPEs, communications, networking, community service opportunities, and building up the CGFM. The Amended Chapter Bylaws are releasing soon. **Also, Join us for a virtual networking event the 3rd week of December, 2021.** Many survey respondents are excited by the prospect of virtual networking and we promise to deliver!

Plus a status check-in toward some challenging goals (pg. 4)

Active Membership (with all students)	Govt	Young Professionals	E-MBR Student	Retired	Lifetime	Private	Total	Number of Active CGFM <sub>s</sub>		
Program YTD 2021-2022	49	3	11	2	3	3	71	27		
June-21	45	1	1	2	3	3	55	24		
June-20	51	2	1	4	3	4	65	29		
June-19	44	1	2	3	3	3	56	26		
Active Membership (with all students)	Academic	City	County	Federal	Private	Retired (not working)	State	Student	Other (Incl. Tribal)	Total (Not Always = Active Members)
2021 – 2022 - Program YTD	4	10	8	23	3	5	6	11		70
June-21	3	8	8	20	3	5	6	1		54
June-20	4	8	13	24	3	7	4	1	1	65
June-19	6	6	11	18		6	2	2	5	56

We have many opportunities for greater participation in the chapter, including serving on a committee, on a special project, or as a board member. Please email us at [info.agaseattle@gmail.com](mailto:info.agaseattle@gmail.com) if you are interested and would like to learn more.

# Programs & Activities



**Volunteer of the Year.** AGA Seattle's 2020-2021 Volunteer of the Year was **Gabrielle Sivage**. Gabrielle poured her energy into increasing the number and types of community service events during the program year as the chapter sought ways to support our community even though we could not meet in person.

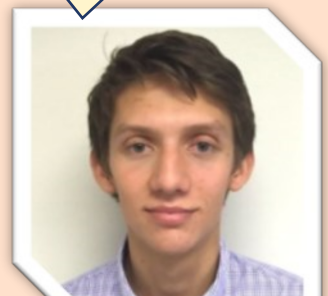
Seattle Chapter Board - The **2021-2022** program year [www.agacgfm.org/Chapters/Seattle-Chapter/Our-Chapter/Chapter-Leadership.aspx](http://www.agacgfm.org/Chapters/Seattle-Chapter/Our-Chapter/Chapter-Leadership.aspx)

<p><b>Chapter President Gabrielle Sivage, CGFM</b>                  Bylaws &amp; Procedures Co-Chair                  Community Service Chair                  CGFM and Communications Co-Chair</p> 	<p><b>President-Elect Tony Eayrs</b>                  Membership Chair</p> <p><b>Secretary Recently Vacant</b></p> <p><b>Co-Treasurer Katherine King</b>                  Accountability Outreach Chair                  Nominating Committee Chair</p> <p>CGFM Co-Chair  <b>Alec Chandler, CGFM</b></p> <p>Newsletter Editors  <b>John Kurpierz</b></p> <p style="text-align: right;"><b>Advisory Board Member:</b> <b>E. Stephen Kim, CGFM</b></p>	<p><b>Immediate-Past President Sam Lord, CGFM</b>                  NCC Representative &amp; Co-Treasurer                  Bylaws &amp; Procedures Co-Chair                  Communications Co-Chair                  Students and Young Professionals Chair</p> <p>Meeting, Events &amp; Continuing Education Chair  <b>Jason Miller, CGFM</b></p> <p>At-Large Board Members  <b>Dr. Ken Smith, Past President</b>  <b>John Kurpierz, PhD Candidate</b>  <b>Edward Johnson, CGFM</b>  <b>Sally Stopher, CGFM</b></p>
---	--	--

## Met Training, Education, CPE and CGFM goals this year and added three New CGFM's to the Chapter

- ◆ Seattle, with Northern Utah Chapter, co-hosted delayed CGFM test prep training originally meant to start March 2020 that was moved and still completed in 2020.
- ◆ 22 CPE's: Seattle hosted an education event roughly monthly (except March due to COVID-19) with diverse subject matter:
  - 10/16/2020 - Coleen Rozillis and Halie Garcia, Moss Adams, *Enterprise Risk Assessments: Best Practices for Maximum Insights* (1 CPE)
  - 12/2/2020 - Gabrielle Sivage CGFM & Tony Eayrs, King County Washington, *Problem Solving in a Toxic Workplace* (1 CPE)
  - 12/9/2020 - AGA Webinar, *Implementing, Controlling, and Monitoring Emergency Funding under CARES Act* (2 CPE)
  - 1/12/2021 - Valerie Moseley, CPA, *Annual Tax Update* (1 CPE)
  - 2/16/2021 - Panel Discussion of AGA's *Citizen-Centric Report- Innovative Summary Reporting to Citizens* (1 CPE)
  - 4/7/2021- AGA Webinar, *Ethics* (2 CPE)
  - 4/27-28/21 - *Governmental Accounting & Auditing Conference* co-sponsored with the Washington Society of Certified Public Accountants. All virtual training. (16 CPEs)

3 regional professionals attended CGFM Test Prep, including Board Member **Alec Chandler (below)**. May 2021 he became the CGFM Co-Chair, earning his CGFM July 2021



**Community Service**

Served a family in need through gifts of a **Thanksgiving meal and other unexpected items**. Family matriarch: "It most certainly made the Thanksgiving holiday much brighter and we are SO grateful to you."

In partnership with Sound Generations, funded **Thanksgiving meals** provided for seniors through various region community centers

Partnered with **Toys for Tots** to raise funds and donate toys and other holiday gifts to Seattle-area children

Raised funds for Northwest Harvest's GoFundMe campaign to **fight food insecurity** worsened by COVID-19  
 Donated to **AGA's National Community Service Fund**

Lifting children spirits for hope during COVID-19 campaigned for clothes and toys directly with The **Treehouse project for foster children**

# Chapter Financials



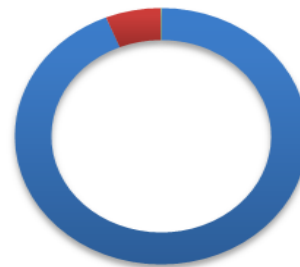
## AGA Seattle Chapter Revenues

Sources	Actuals 2018-2019	Actuals 2019-2020	Actuals 2020-2021
Joint Conferences	\$0	\$2,449.49	\$5,020.92
Chapter Dues	\$257.42	\$259.33	\$325.67
Interest Income	\$3.41	\$3.34	\$3.89
Other Income	\$59.68	\$8.05	\$0
Luncheon Receipts	\$125.00	\$0.00	\$0
<b>Total Inflows</b>	<b>\$445.51</b>	<b>\$2,720.21</b>	<b>\$5,350.48</b>

At the end of program year 2020-2021 we drafted financial policies and procedures to outline how we plan to conduct a financial review of our chapter. Our goal is to conduct our first financial review in program year 2021-2022.

Our primary source of income is from partnering with the Washington Society of Certified Public Accountants in putting on an annual Government Accounting and Auding Conference. Other sources include chapter membership dues, reimbursements, luncheon receipts, and interest.

Revenues by Source



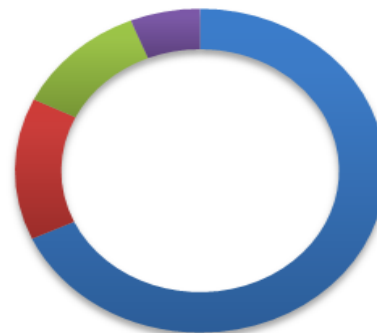
■ Joint Conferences ■ Chapter Dues ■ Interest Income

## AGA Seattle Chapter Expenses

Expenses	Actuals 2018-2019	Actuals 2019-2020	Actuals 2020-2021
PDT	\$0	\$372.11	\$0
Awards & Recognition	\$145.09	\$193.80	\$105
Luncheon/ Webinar	\$650.59	\$34.40	\$1,170.36
Donations	\$0	\$0	\$200
Misc. Exp	\$707.65	\$60	\$243.36
<b>Total Expenses</b>	<b>\$1,503.33</b>	<b>\$660.31</b>	<b>\$1,718.72</b>

Our expenditures this year are primarily related to technology expenses and webinar registration fees. In order to continue offering trainings and meet our education goals we pivoted to a full virtual format and invested in virtual conferencing licenses and registered as a chapter for several AGA National webinars.

Expense by Type



■ Luncheon/ Webinar ■ Misc Exp  
■ Donations ■ Awards & Recognition

We also implemented a new goal of donating to 3 charities. Other expenses are related to recognizing our Emerald Award winners and chapter expenses.

# Goals & Challenges

## Membership Value and Appreciation

The Seattle Chapter strives to meet our mission in service to members, students and young professionals. We are proud this year to collect membership survey data. This data is already shaping monthly meetings and events, trainings/CPEs, communications, networking, community service opportunities, and building up the CGFM.

**The Scorecard (directly below)** shares our chapter's performance meeting the Plans, Goals and Challenges to help reach mission success, especially on challenging goals. See how on track we are toward improving chapter service and accomplishments.

Seattle Goals & Plans Announced 2019-2020 CCR	Program YEAR 2020 - 2021	Program YTD 2021 - 2022
<b>Membership</b> - Increase chapter membership by 5% over June 2020 numbers	<b>Unmet</b>	<b>Exceeding</b>
<b>CGFM</b> - Market the value of the CGFM to employers as value and performance for training funds during COVID-19 resourcing constraints	<b>Partially Met</b>	<b>TBD</b>
<b>Community Service</b> - Support multiple donation opportunities (e.g. setting up giving page, if possible, and food item donation opportunities).	<b>Exceeded</b>	<b>On track</b>
<b>Professional Education</b> - Schedule the year's monthly training lunches to include 6-8 hours of continuing professional education (CPE) throughout the program year.	<b>Exceeded</b>	<b>On track</b>
<b>Accountability</b> - Achieve the AGA National Certificate of Excellence for the 2019-2020 report (and annually).	<b>Met</b>	<b>On track</b>
<b>Early Careers</b> - A least 3 events with student accounting and accountability groups at local colleges and universities. Sign up 3 new students and 3 faculty members for e-memberships.	<b>Partially Met Recruited 1 Student</b>	<b>On track</b>
<b>Chapter Board</b> - Recruit at least one student or young professional member to the board. Recruit at least one additional new board member.	<b>Unmet</b>	<b>On track</b>
	<b>Met</b>	<b>On track</b>
<b>Meetings</b> - Select and successfully incorporate webinar/virtual meeting software for training events and board meetings.	<b>Met</b>	<b>Exceeding</b>

**Students and Young Professionals WE WANT YOU.** Join us in a partnership to meet your needs and join the Seattle Board. Consider reaching us to find a passion project and experience professional development, growth, mentoring and more.

If you'd like to learn more about our AGA Seattle chapter and AGA membership, then please visit us at [www.agacgfm.org/Chapters/Seattle-Chapter/Home.aspx](http://www.agacgfm.org/Chapters/Seattle-Chapter/Home.aspx)

Learn about



## Challenges

COVID-19 distancing restrictions forced us to bring our full meetings to a virtual platform, which created limitations in networking and sharing, but also allowed other members to join in due to added accessibility for some.

The COVID-19 pandemic continued impacting chapter operations, limiting options for events and meetings and adding additional work-related challenges for many of our members. Despite these challenges, we continued to offer quality educational events and are proud to attain Gold status with the 2020-2021 Achievement in Chapter Excellence (ACE) award.

In addition to all-virtual training sessions, we tested a virtual board dinner and board retreat planning sessions. We learned not to mix bylaw amendment discussion. Aside from the challenges of transitioning project collaboration and production to virtual meetings and events, the Seattle Chapter is looking for ways to continue networking and continued support on community service opportunities.

If you have any questions or suggestions, then please write us at [info.agaseattle@gmail.com](mailto:info.agaseattle@gmail.com)



Visit us on

